

MATRIX INSTRUMENT RANGE

FEATURES

- CANbus driven Tachometer
- Speedometer and 2" gauges receive data from Tachometers
- LCD on Tachometer and Speedo displays all available data and alarms
- IP67 waterproof / submersible housings (with connector fitted)
- Dry Nitrogen filled to minimize fogging
- LED dimmable, automotive style backlighting (red)
- CANbus connectivity
- Large FSTN LCD (excellent optical performance under all lighting conditions) on speedo and tach (with contrast adjustment)
- 10-18 VDC operational range
- Alarm output for vessel info
- Polished chrome bezels
- Soft-function tactile push keys for navigation
- Fully sunlight readable display
- Plug and play connectors



The Matrix gauge set is intended to operate on Mercury SmartCraft® or NMEA 2000® engines (max 4 engines / 2 stations). The gauges operate on 12v systems and support single, dual, triple or quad engine applications.

In a Matrix gauge set, the 3" tachometer is the master and connects directly to the data bus. All other gauges are slaves and connect to the tachometer RS-485 private bus (immune to electrical noise, more robust and reliable). The tachometer reads engine parameters and forwards them on to the slave gauges.

PARAMETERS SUPPORTED

• Engine RPM	• Reserve Oil Level	• Throttle Position	• Tank 2
• Coolant Temperature	• Water Pressure	• Load Percent	• RPM Synch
• Engine Oil Pressure	• Coolant Pressure	• Oil Level	• Trim Synch
• Engine Hours	• Oil Temperature	• Boost Pressure	
• Fuel Low	• Fuel Pressure	• Tank 1	

ORDER INFORMATION

MATRIX INSTRUMENTS	SIZE	PART No.
Speedometer w/ LCD US 90 MPH	3"	70002D
Voltmeter 10 - 16 VDC	2"	70004D

Issue Date - Jan 2014

Issue Number - i8



www.seastarsolutions.com



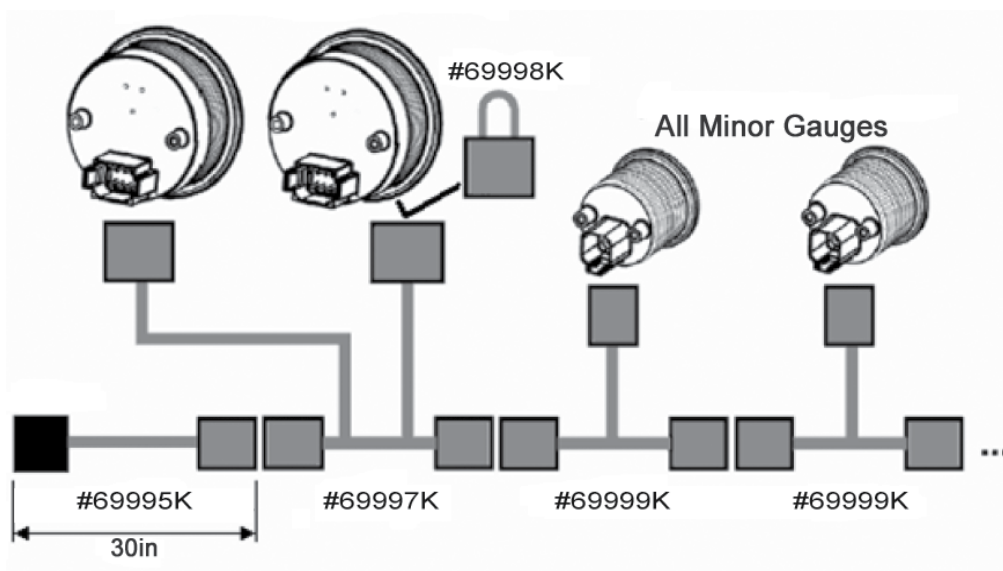
MATRIX INSTRUMENT RANGE

ORDER INFORMATION

MATRIX INSTRUMENTS	SIZE	PART No.
Fuel Primary	2"	70003D
Fuel Secondary	2"	69992D
Temperature 240F	2"	70006D
Water pressure 40 PSI	2"	69994D
Oil Pressure 80 PSI	2"	70005D
Trim	2"	69993D
Tachometer - SmartCraft	3"	70000D
Tachometer - NMEA 2000	3"	70001D
ACCESSORIES		
Harness - Tachometer to SmartCraft, 30"		69995K
Harness - Tachometer to NMEA 2000, 30"		69996K
Harness - Tachometer to Speedometer, 48"		69997K
Terminator - Needed when no speedo is used		69998K
Harness - Any 2" gauge to another, 8"		69999K

TECHNICAL DATA

Matrix Harness / Connectors



Issue Date - Jan 2014

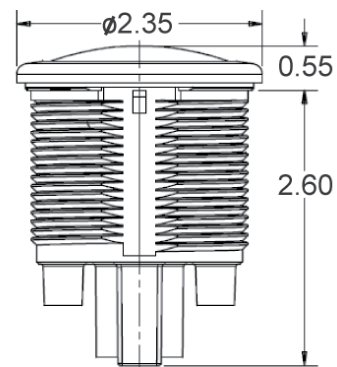
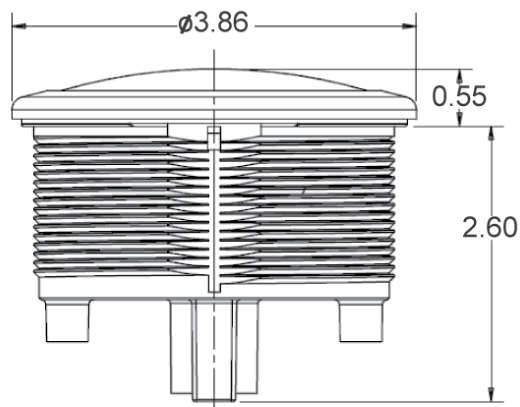
Issue Number - i8

Learn More

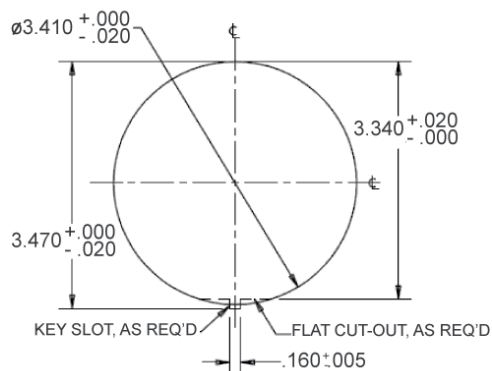


MATRIX INSTRUMENT RANGE

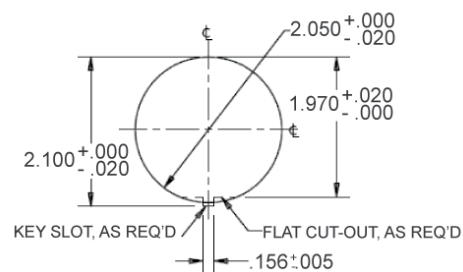
TECHNICAL DATA



RECOMMENDED
PANEL CUTOUT



RECOMMENDED
PANEL CUTOUT



Issue Date - Jan 2014

Issue Number - i8



Learn More



www.seastarsolutions.com

