



ENGINE MANUFACTURER	YEAR	MODEL	CYLINDER	ENGINE ADAPTER PLATES		
				SINGLE	TWIN c/w tie-rod	TWIN w/o tie-rod
<b>HONDA</b>	1996-TO DATE	75-90 HP	<b>HC5342</b>	<b>H05028</b>	H05044 & H05009	H05044A

Figure A.

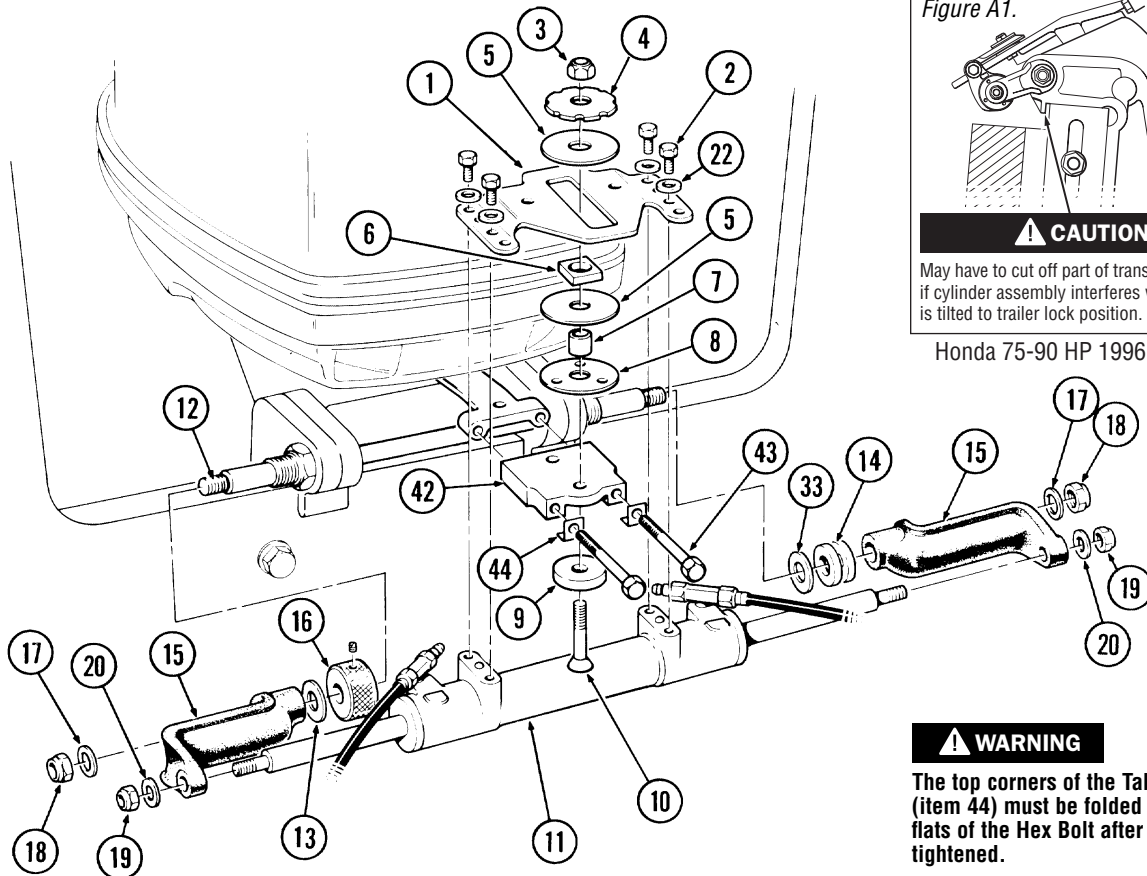


Figure A1.

**CAUTION**

May have to cut off part of transom hangers if cylinder assembly interferes when motor is tilted to trailer lock position.

Honda 75-90 HP 1996 to 1998

**WARNING**

The top corners of the Tab Washer (item 44) must be folded against the flats of the Hex Bolt after bolts are tightened.

ITEM	PART #	QTY	DESCRIPTION
1	722222	1	Slide Plate
2	742724	4	Screw 5/16" x 3/4" Hex Head
3	113529	1	Nut 3/8" NF Nylok®
4	721220	1	Notched Washer
5	727724	2	Slide Washer
6	729221	1	Slide Follower
7	721126	1	Follower Bush
8	736028	1	Bottom Washer (3 Hole)
9	721427	1	Countersunk Washer
10	185921	1	Screw 3/8" x 1-5/8" Flat Head
11	HC5344	1	Cylinder c/w Bleed Tee's
12	730229	1	Support Rod
13	202121	2	Washer 5/8" dia.
14	995876	2	Spacer

ITEM	PART #	QTY	DESCRIPTION
15	809900	2	Support Bracket
16	436627	1	Adjusting Nut c/w Set Screw
17	202027	2	Washer 1/2" dia.
18	192126	2	Nut 1/2" NF Nylok®
19	731720	2	Nut 7/16" dia.
20	731625	2	Washer 7/16" dia.
22	010924	4	Washer 5/16" dia.

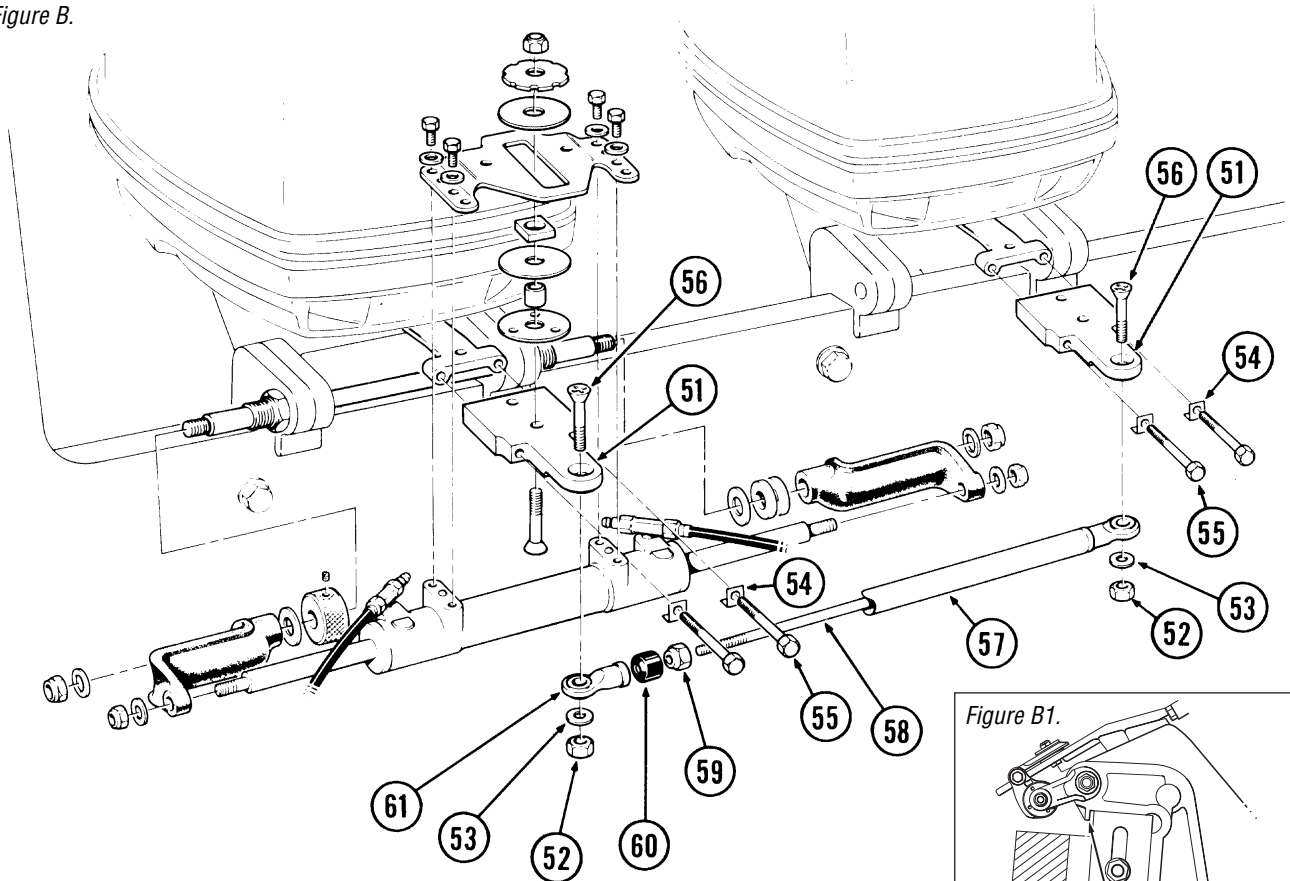
**ADAPTER KIT# H05028.**

42	689828	1	Adapter Plate Honda 75/90
43	752927	2	Screw M10-1.25 x 90 Hex Head
44	823673	2	Locking Tab Washer M10



ENGINE MANUFACTURER	YEAR	MODEL	CYLINDER	ENGINE ADAPTER PLATES		
				SINGLE	TWIN c/w tie-rod	TWIN w/o tie-rod
<b>HONDA</b>	1996-TO DATE	75-90 HP	<b>HC5342</b>	H05028	<b>H05044 &amp; H05009</b>	H05044A

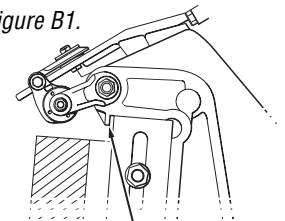
Figure B.



**⚠ WARNING**

The top corners of the Tab Washer (item 54) must be folded against the flats of the Hex Bolt after bolts are tightened.

Figure B1.



**⚠ CAUTION**

May have to cut off part of transom hangers if cylinder assembly interferes when motor is tilted to trailer lock position.

Honda 75-90 HP 1996 to 1998

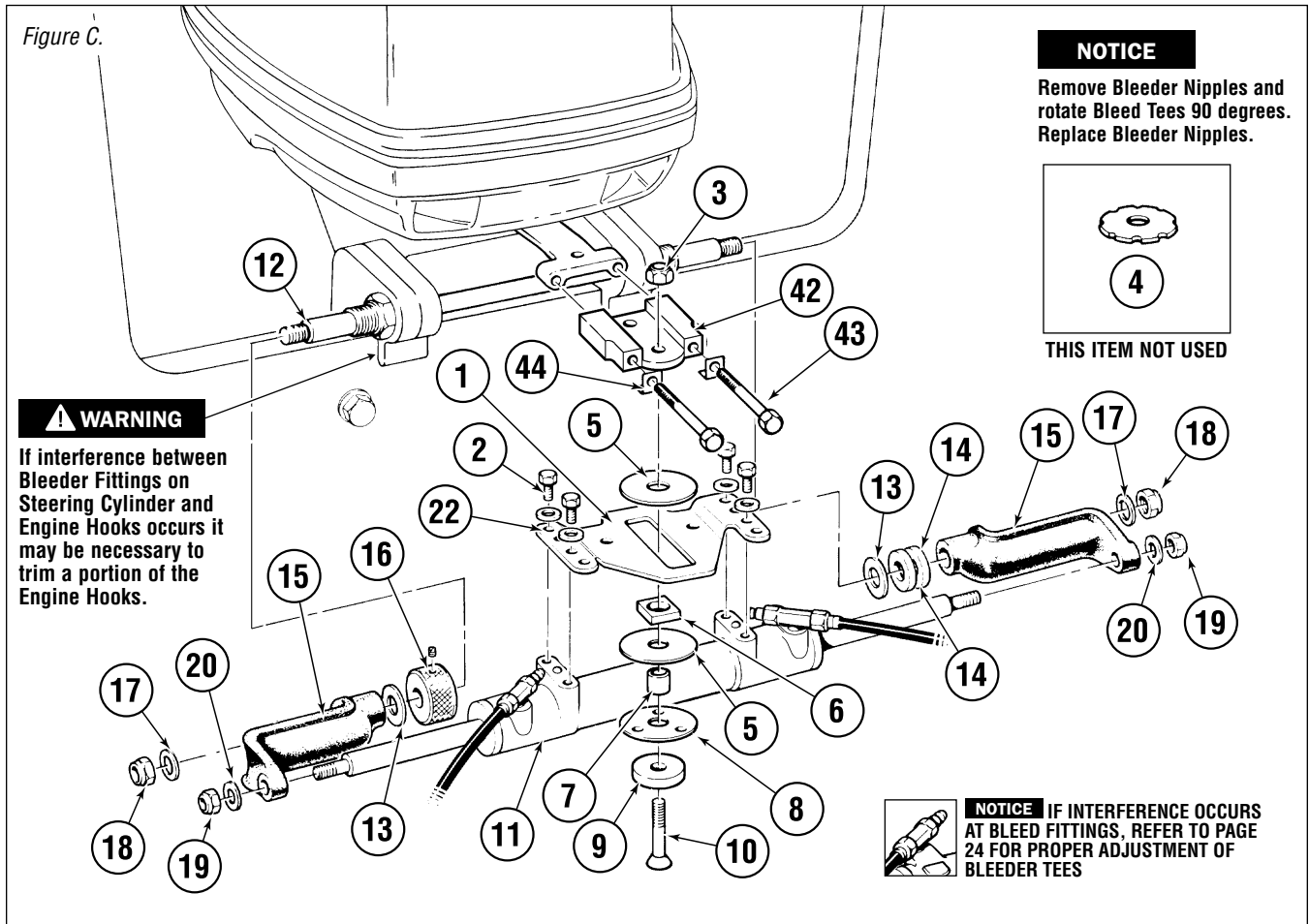
ITEM	PART #	QTY	DESCRIPTION
51	687723	2	Extension Plate Honda
52	113529	2	Nut 3/8" NF Nylok®
53	113622	2	Washer 3/8" dia.
54	823673	4	Locking Tab Washer M10
55	752927	4	Screw M10-1.25 x90 HHCS NLP
56	726825	2	Screw 3/8" x 1-3/4" HHCS
57	722721	1	Stringer Tube
58	722523	1	Threaded Rod c/w Ball Joint

ITEM	PART #	QTY	DESCRIPTION
59	192126	1	Nut 1/2" NF Nylok®
60	746123	1	Obsolete—No longer required
61	116527	1	Ball Joint
62	710921	2	Spacer



ENGINE MANUFACTURER	YEAR	MODEL	CYLINDER	ENGINE ADAPTER PLATES		
				SINGLE	TWIN c/w tie-rod	TWIN w/o tie-rod
<b>HONDA</b>	1998-TO DATE	115-130 HP	<b>HC5342</b>	<b>H05028</b>	H05044A & H05009	H05044A

Figure C.



ITEM	PART #	QTY	DESCRIPTION
1	722222	1	Slide Plate
2	742724	4	Screw 5/16" x 3/4" Hex Head
3	113529	1	Nut 3/8" NF Nylok®
4	721220	1	Notched Washer (not used)
5	727724	2	Slide Washer
6	729221	1	Slide Follower
7	721126	1	Follower Bush
8	736028	1	Bottom Washer (3 Hole)
9	721427	1	Countersunk Washer
10	185921	1	Screw 3/8" x 1-5/8" Flat Head
11	HC5344	1	Cylinder c/w Bleed Tees
12	730229	1	Support Rod
13	202121	2	Washer 5/8" dia.
14	995876	2	Spacer

ITEM	PART #	QTY	DESCRIPTION
15	809900	2	Support Bracket
16	436627	1	Adjusting Nut c/w Set Screw
17	202027	2	Washer 1/2" dia.
18	192126	2	Nut 1/2" NF Nylok®
19	731720	2	Nut 7/16" dia.
20	731625	2	Washer 7/16" dia.
22	010924	4	Washer 5/16" dia.

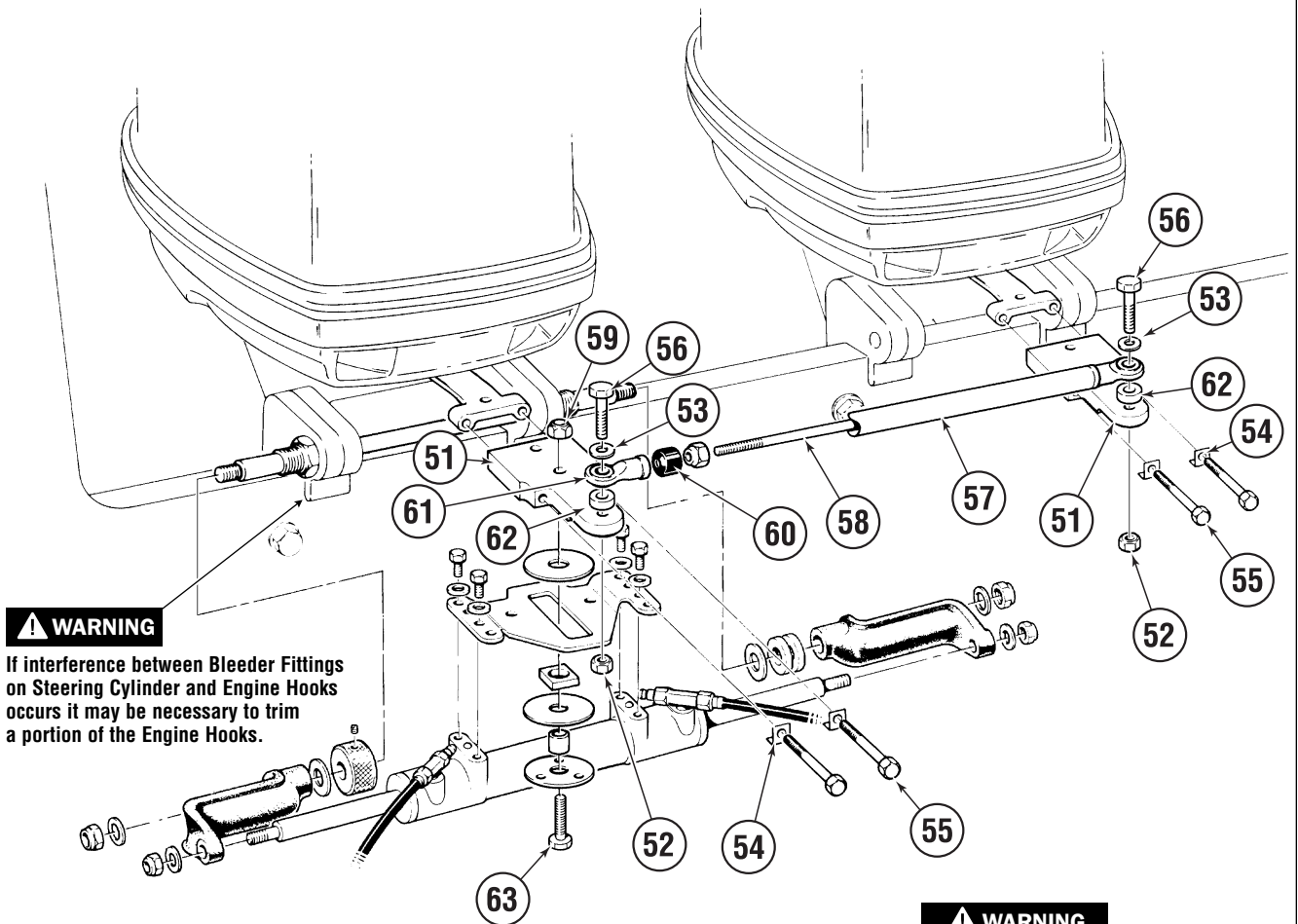
**ADAPTER KIT # H05028**

42	689828	2	Adapter Plate, Honda
43	752927	2	Screw M10-1.25 x 90 Hex Head
44	823673	2	Locking Tab Washer M10



ENGINE MANUFACTURER	YEAR	MODEL	CYLINDER	ENGINE ADAPTER PLATES		
				SINGLE	TWIN c/w tie-rod	TWIN w/o tie-rod
<b>HONDA</b>	1998-TO DATE	115-130 HP	<b>HC5342</b>	H05028	<b>H05044A &amp; H05009</b>	H05044A

Figure D.



**WARNING**

If interference between Bleeder Fittings on Steering Cylinder and Engine Hooks occurs it may be necessary to trim a portion of the Engine Hooks.

**NOTICE**

Remove Bleeder Nipples and rotate Bleed Tees 90 degrees. Replace Bleeder Nipples.

**WARNING**

The top corners of the Tab Washer (item 54) must be folded against the flats of the Hex Bolt after bolts are tightened.

ITEM	PART #	QTY	DESCRIPTION
51	687327	2	Extension Plate Honda
52	113529	2	Nut 3/8" NF Nylok®
53	113622	4	Washer 3/8" dia.
54	823673	4	Locking Tab Washer M10
55	752927	4	Screw M10-1.25 x 90 HHCS NLP
56	726825	2	Screw, 3/8" NF x 1-3/4", HHCS
57	722721	1	Stringer Tube

ITEM	PART #	QTY	DESCRIPTION
58	722523	1	Threaded Rod c/w Ball Joint
59	192126	1	Nut 1/2" NF Nylok®
60	746123	1	Obsolete—No longer required
61	116527	1	Ball Joint
62	710921	2	Spacer
63	198767	1	HHCS, 3/8" NF x 1-5/8", SS, Fully Threaded