



ENGINE MANUFACTURER	YEAR	MODEL	CYLINDER	ENGINE ADAPTER PLATES		
				SINGLE	TWIN c/w tie-rod	TWIN w/o tie-rod
JOHNSON/EVINRUDE	1991-TO DATE	90-175 HP	HC5345	NOT REQ.	H05071A	H05072A
	1991-TO 1992	250 HP	HC5345	NOT REQ.	H05001A	H05030A
	1993-TO DATE	250 HP	HC5345	NOT REQ.	H05073A & H05009	H05073A
	1991-TO DATE	300 HP	HC5345	NOTREQ.	H05001A	H05030A
	1991-TO DATE	200-225 HP	See Page 2			
	1997-TO DATE	150 HP FICHT	See Page 2			
	1977-TO 1990	90-300 HP	See Page 3			

⚠ WARNING

Starboard hose fitting must be turned 180° so that both hose fittings are facing away from each other or interference may occur. Check for tie bar / hose fitting interference by tilting each engine independently at both hard over steering positions. Re-orientation of one or both elbow fittings may be required if interference occurs.

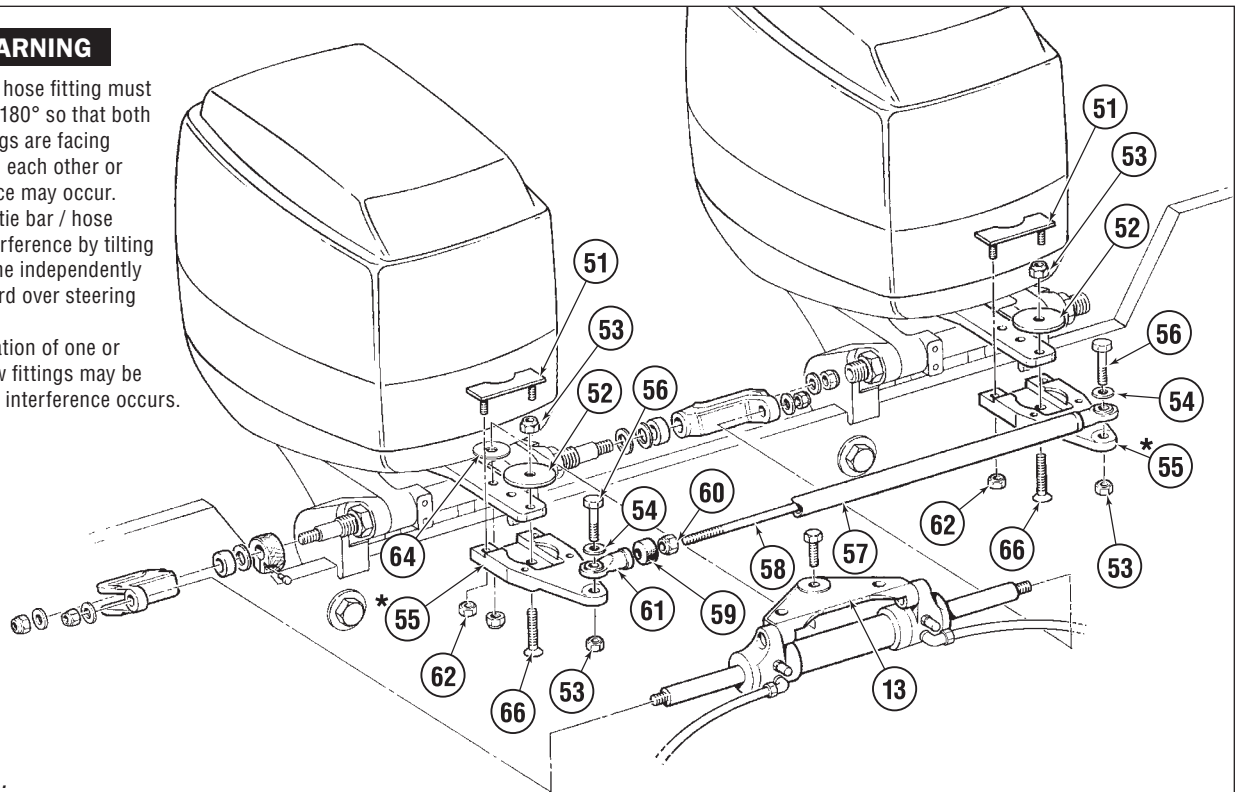


Figure A.

ITEM	PART #	QTY	DESCRIPTION
51	722829	2	Clamp Plate
52	753428	2	Bottom Washer (MC)
53	113529	4	Nut 3/8" NF Nylok®
54	113622	2	Washer 3/8" dia.
56	186426	2	Screw 3/8" NF x 2-1/4" HHCS
57	722721	1	Stringer Tube
58	722523	1	Threaded Rod c/w Ball Joint
59	746123	1	Obsolete—No longer required
60	192126	1	Nut 1/2" NF Nylok®
61	116527	1	Ball Joint
62	191424	4	Nut 1/4" NC Nylok®
64	113600	2	Washer 3/8" x 1-1/4" x .062" SS
66	186000	2	Screw 3/8" x 1-1/4" Flat Head

ITEM	PART #	QTY	DESCRIPTION
PARTS SPECIFIC TO H05072A & H05071A			
*55	739425	2	Extension Plate
PARTS SPECIFIC TO H05073A			
*55	835120	2	Extension Plate
PARTS SPECIFIC TO H05030A & H05001A			
*55	710030	2	Extension Plate

ASSEMBLY ORDER:

- 1) Assemble items 51, 55 & 62 only, in position shown.
- 2) Slide pivot plate (item 13) over extension plate (item 55) & push as far to back of motor as possible.
- 3) Install bolt (item 63) through extension plate & tiller arm.
- 4) Assemble cylinder assembly, with fender washer (item 64) as per installation instructions.
- 5) Install remaining parts as indicated.



ENGINE MANUFACTURER	YEAR	MODEL	CYLINDER	ENGINE ADAPTER PLATES		
				SINGLE	TWIN c/w tie-rod	TWIN w/o tie-rod
JOHNSON/EVINRUDE	1991-TO DATE	200-225 HP	HC5345	NOT REQ.	H05071A	H05072A
	1997-TO DATE	150 HP FICHT	HC5345	NOT REQ.	H05071A	H05072A

⚠ WARNING

The port hose fitting must be turned upwards 5°-10° or interference may occur. For portside installation, starboard hose fitting must be turned 180° so that both hose fittings are facing away from each other or interference may occur. Check for tie bar / hose fitting interference by tilting each engine independently at both hard over steering positions. Re-orientation of one or both elbow fittings may be required if interference occurs.

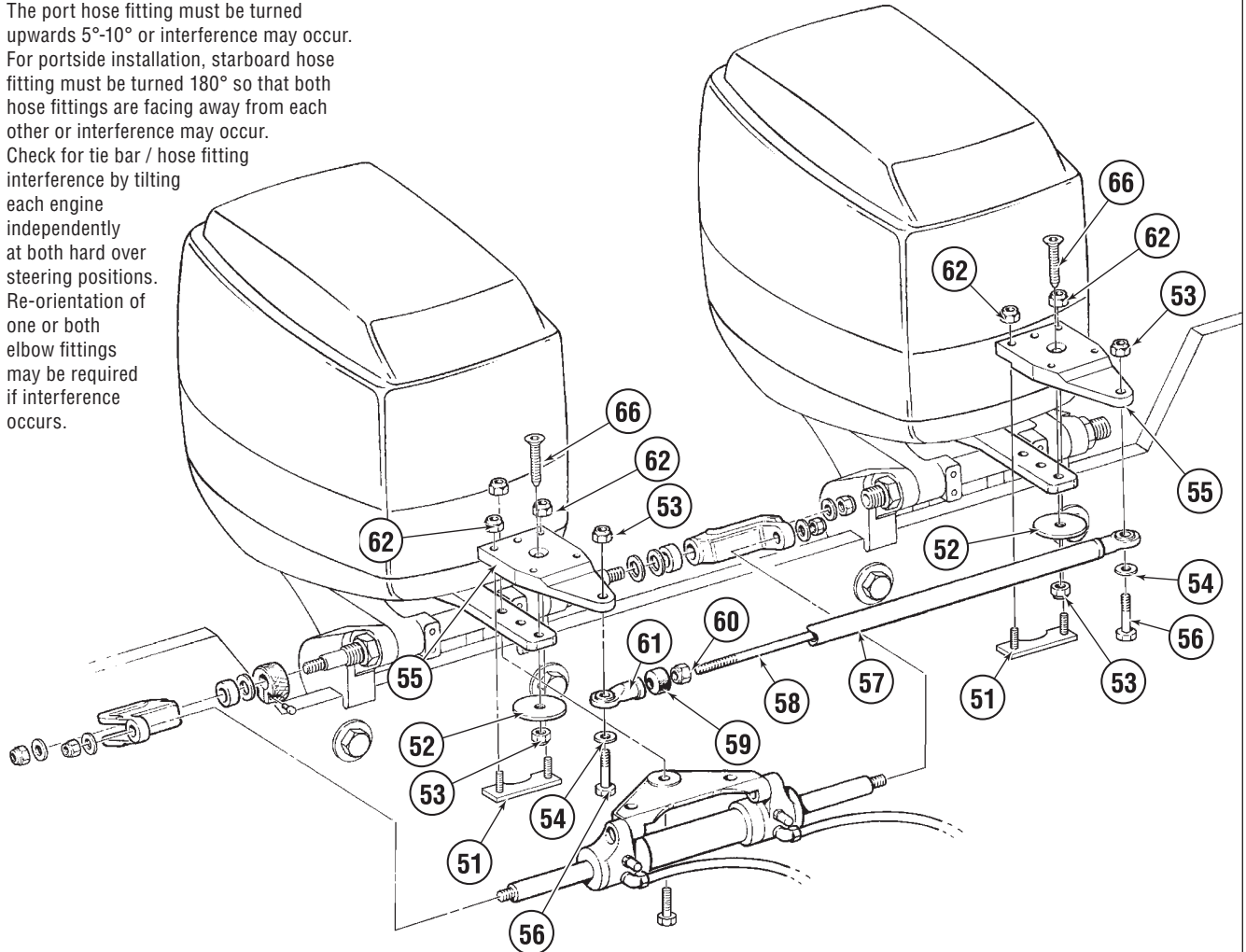


Figure B.

ITEM	PART #	QTY	DESCRIPTION
51	722829	2	Clamp Plate
52	753428	2	Bottom Washer (MC)
53	113529	4	Nut 3/8" NF Nylok®
54	113622	2	Washer 3/8" dia.
55	739425	2	Extension Plate
56	186426	2	Screw 3/8" NF x 2-1/4" HHCS
57	722721	1	Stringer Tube
58	722523	1	Threaded Rod c/w Ball Joint

ITEM	PART #	QTY	DESCRIPTION
51	722829	2	Clamp Plate
52	753428	2	Bottom Washer (MC)
53	113529	4	Nut 3/8" NF Nylok®
54	113622	2	Washer 3/8" dia.
55	739425	2	Extension Plate
56	186426	2	Screw 3/8" NF x 2-1/4" HHCS
57	722721	1	Stringer Tube
58	722523	1	Threaded Rod c/w Ball Joint



ENGINE MANUFACTURER	YEAR	MODEL	CYLINDER	ENGINE ADAPTER PLATES		
				SINGLE	TWIN c/w tie-rod	TWIN w/o tie-rod
JOHNSON/EVINRUDE	1977-TO 1990	90-300HP	HC5342	NOT REQ.	H05001A	H05030A

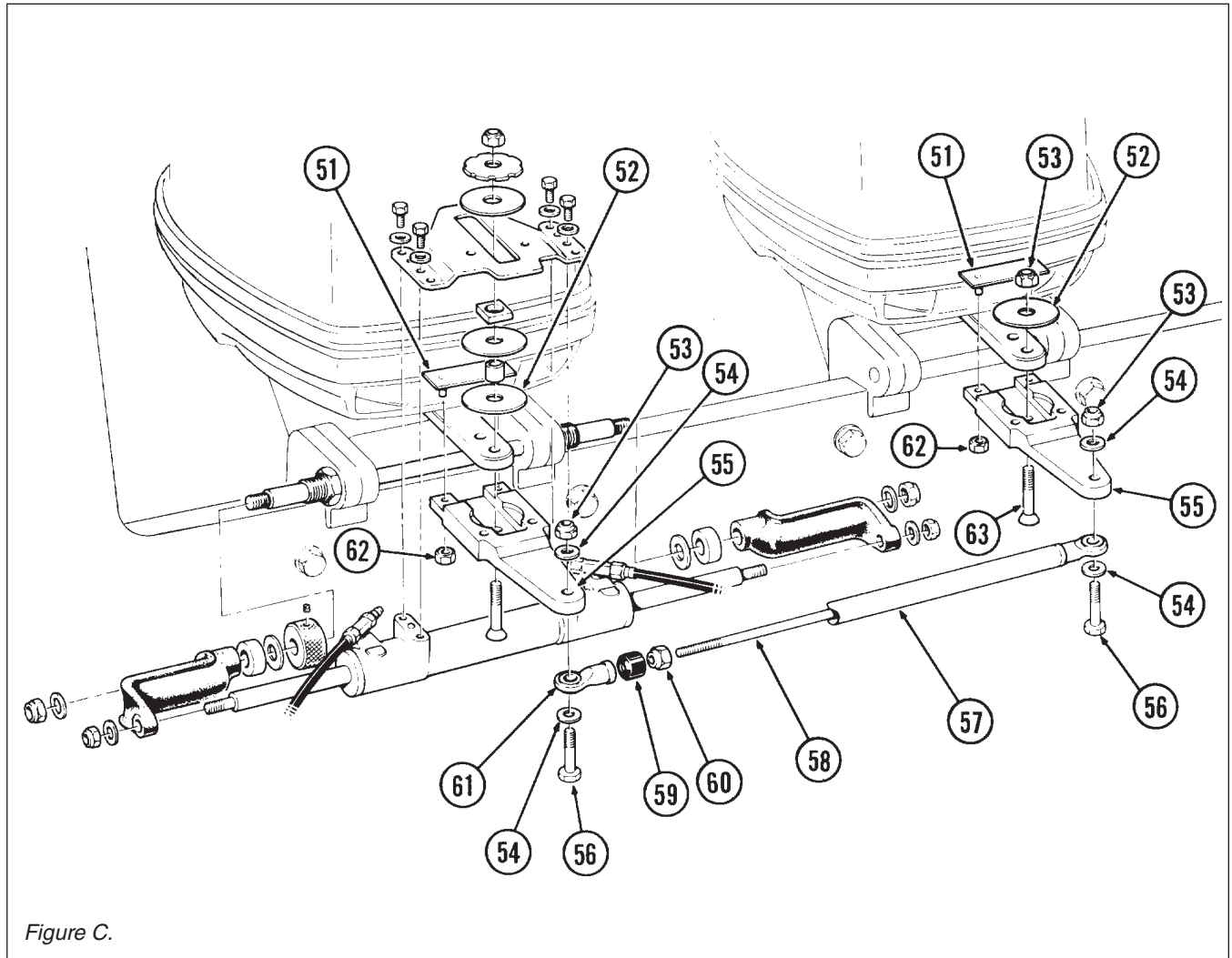


Figure C.

ITEM	PART #	QTY	DESCRIPTION
51	722928	2	Clamp Plate
52	753428	2	Bottom Washer (MC)
53	113529	3	Nut 3/8" NF Nylok®
54	113622	4	Washer 3/8" dia.
55	725625	2	Extension Plate
56	186426	2	Screw 3/8" x 21/4" Hex Head
57	722721	1	Stringer Tube
58	722523	1	Threaded Rod c/w Ball Joint
59	746123	1	Obsolete—No longer required
60	192126	1	Nut 1/2" NF Nylok®

ITEM	PART #	QTY	DESCRIPTION
61	116527	1	Ball Joint
62	191424	4	Nut 1/4" NC Nylok®
63	185921	1	Screw 3/8" x 15/8" Flat Head