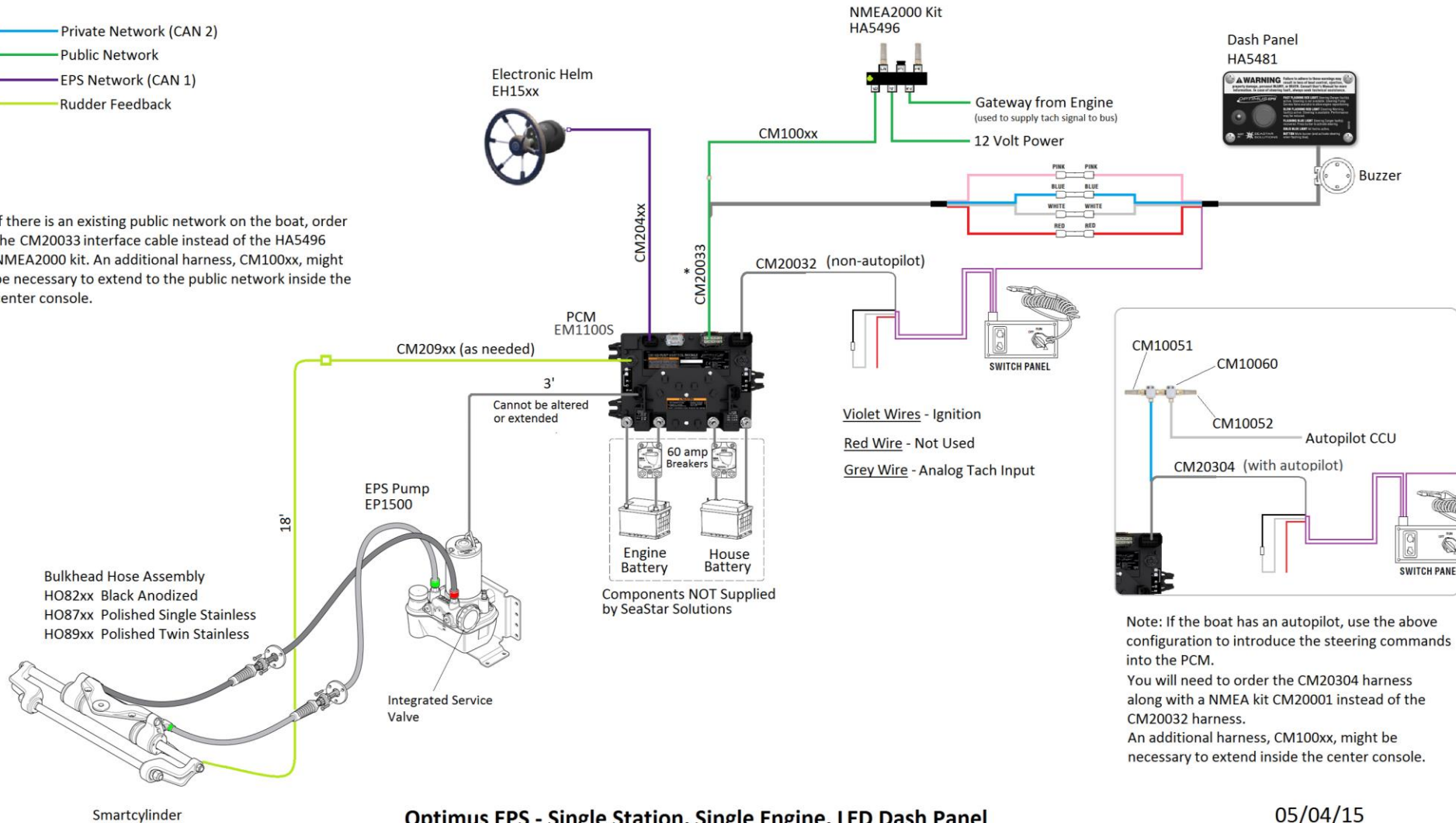


Optimus EPS - System Overview

Single Station, Single Engine, LED Panel - Outboard

- Private Network (CAN 2)
- Public Network
- EPS Network (CAN 1)
- Rudder Feedback

* If there is an existing public network on the boat, order the CM20033 interface cable instead of the HA5496 NMEA2000 kit. An additional harness, CM100xx, might be necessary to extend to the public network inside the center console.



Optimus EPS - Single Station, Single Engine, LED Dash Panel

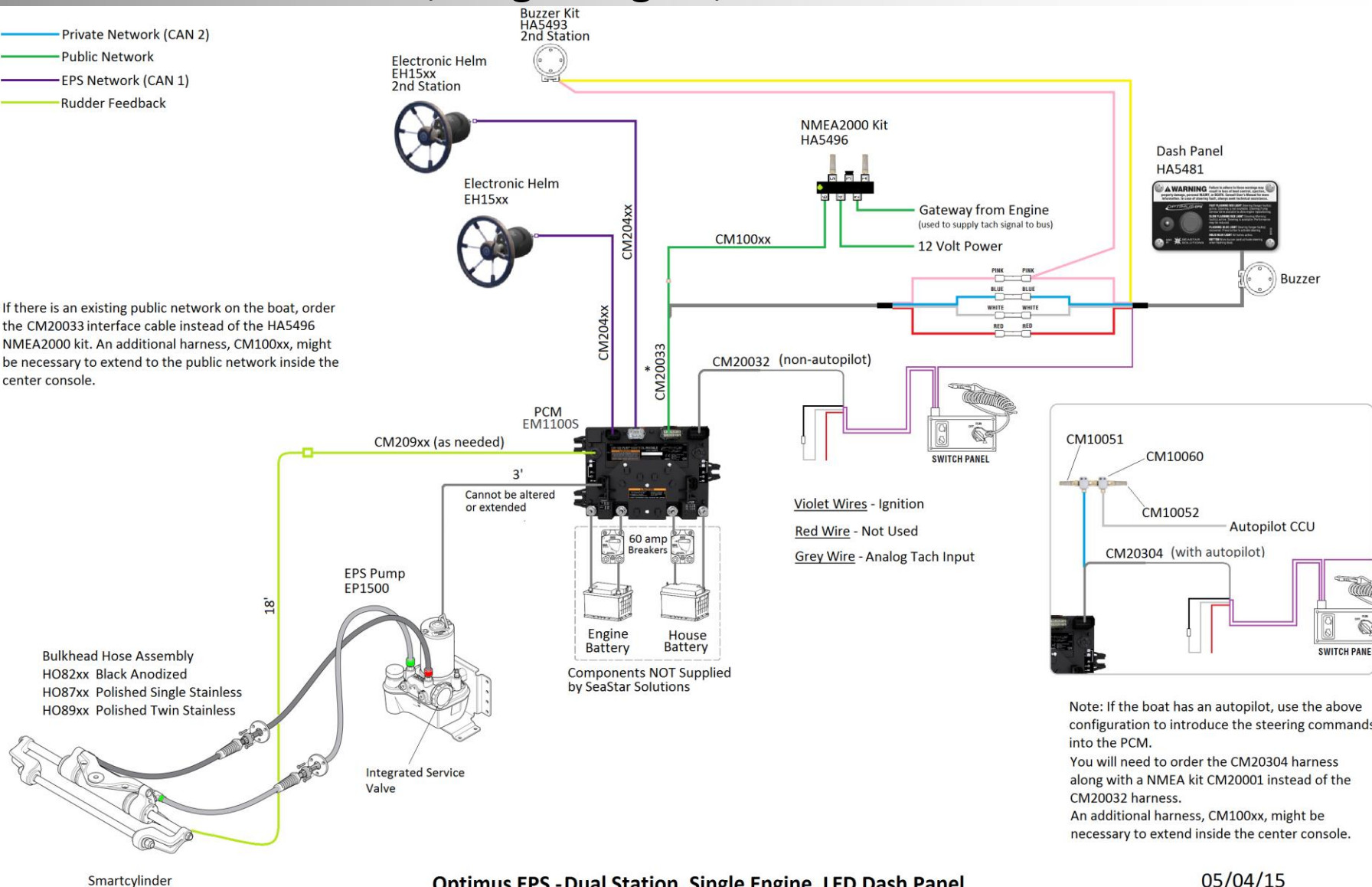
05/04/15

Optimus EPS - System Overview

Dual Station, Single Engine, LED Panel - Outboard

- Private Network (CAN 2)
- Public Network
- EPS Network (CAN 1)
- Rudder Feedback

* If there is an existing public network on the boat, order the CM20033 interface cable instead of the HA5496 NMEA2000 kit. An additional harness, CM100xx, might be necessary to extend to the public network inside the center console.



Optimus EPS - Dual Station, Single Engine, LED Dash Panel

05/04/15

Optimus EPS Commissioning – Outboard-LED Dash Panel

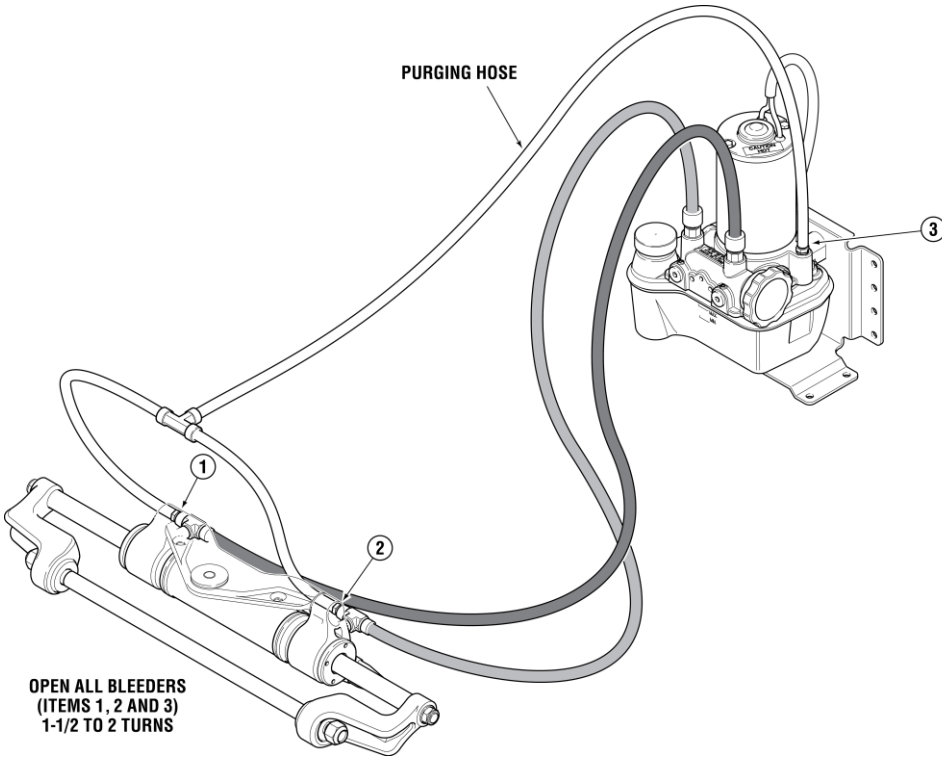
Setup, Purge and Calibration

A basic system setup, purge and calibration can be performed with the dash panel.

Procedure:

1. All installation steps must be completed. If you intend to use an engine RPM signal from an NMEA2000 bus it must be connected.
2. Turn the ignition on while pressing and holding the pushbutton on the dash panel. Hold the button down for 2-5 seconds after the ignition is switched on.
3. Release the button for 2-5 seconds, then press it again for at least 2 seconds. (If you steer the helm during this setup entry procedure you will need to start over.)
4. The dash panel lamp will flash purple (both red and blue LEDs together) and the buzzer will beep once to indicate that the system is in setup mode. The system will automatically be configured as a single engine system with no CANtrak display. Unless an engine RPM source is detected on the NMEA2000 network it will be configured for an analog tachometer.
5. The system is ready to purge. Refer to the purge instructions in the Optimus EPS Installation Manual (Book 50). Ignore instructions related to a second engine and to the CANtrak display.
6. Once the lines are purged close the bleed fittings. The system is ready to calibrate.
7. Slowly steer in one direction until you hear a brief beep from the buzzer, indicating a hard stop. Steer in the other direction until you hear the beep indicating the second hard stop. The system is now calibrated.
8. A steady buzzer during the setup means that the hoses are installed to the wrong ports. You will need to swap them.
9. Once the calibration is completed, cycle the system power to finish the setup.

PURGING HOSE



OPEN ALL BLEEDERS
(ITEMS 1, 2 AND 3)
1-1/2 TO 2 TURNS

Steering Settings

The default steering settings have been carefully chosen to be satisfactory for most users. You will need a CANtrak display or Datalink software to make changes, if required.