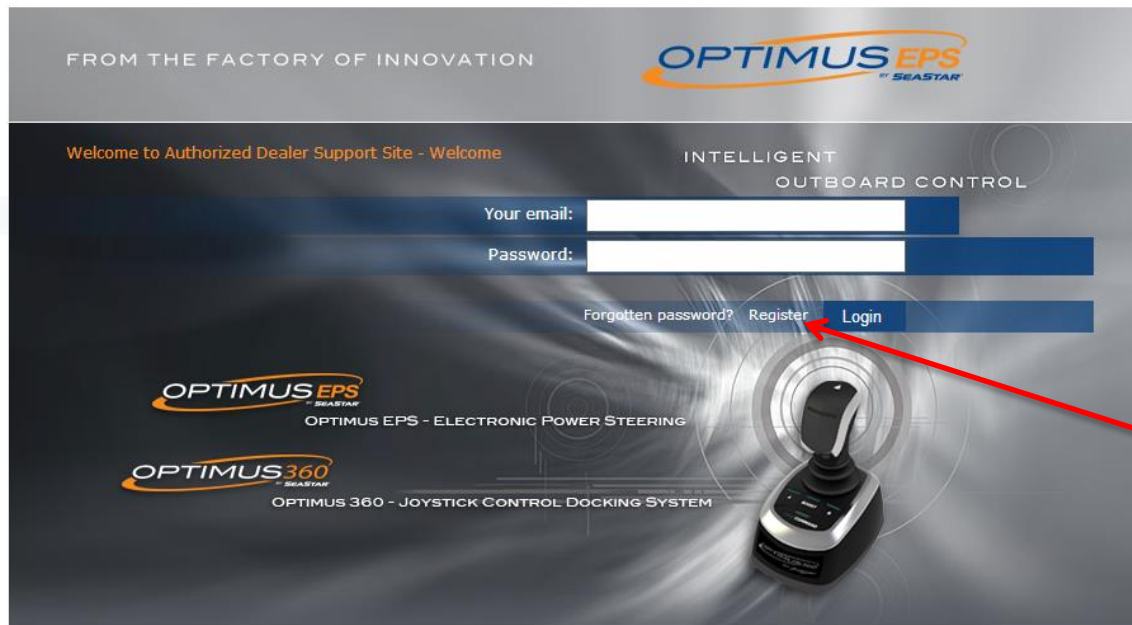


# Updating Software

In order for the system to configure properly, it is important to confirm/install the latest software into the components. The following steps will assist in the process.

**Step 1:** Download the latest software versions from the Optimusdealers.com website. You will need to register on the website in order to gain access.



# Updating Software


FROM THE FACTORY OF INNOVATION  
Dealer Support - Optimus EPS and Optimus 360

Logout Home

WELCOME TO AUTHORIZED DEALER SUPPORT SITE - WELCOME JEFF JATICH

INTELLIGENT OUTBOARD CONTROL

Literature  
Logo's  
Advertisements  
Store Merchandise  
Press/Media Coverage  
Product Images  
Manuals and Instructions  
Price lists  
Survey Forms  
Software Updates  
FAQ's  
Training Presentation  
Troubleshooting  
Warranty



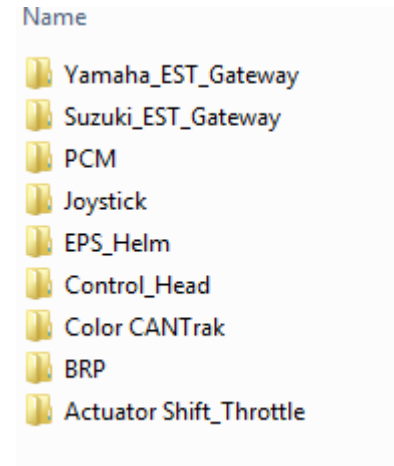
Software Updates - Downloads

PUBLISH DATE	TITLE	DOWNLOAD	READ ME
05/08/2014	OPTIMUS EPS AND OPTIMUS 360 DATALINK UPDATER - REV G	X-MSDOWNLOAD (4B)	READ ME

Electronic Power Steering  
Joystick Docking Control

Contact us with your questions  
View other SeaStar steering products  
Product Warranty Registration  
Optimus 360 by SeaStar Video  
LeisureCat Australia Optimus 360 Video

SEASTAR SOLUTIONS



## Optimus Firmware Folder Structure

Locate the Software Update section of the website and select the download. The download contains an executable file and will automatically place a folder on your desktop called "Optimus Firmware". If you already have the folder, it will simply be updated with the latest firmware versions.

# Updating Color CANTrak Software

## Updating the Color CANTrak Software

The CANTrak software can only be updated from the display. You will need a USB drive (preferably empty) and a computer to perform the update.

### Procedure

1. Make sure the Optimus Firmware folder is up to date
2. Find the Optimus Firmware folder on your desktop and open it, then open the Color CANTrak folder.
3. In the Color CANTrak folder you will find a .zip file. Right-click on the zipped folder then “Extract All” to a clean USB drive.
4. Plug the USB drive into the port on the back of the CANTrak. If your system is off, turn it on now. **Note:** the opening in the back of the color display is tight. Make sure you are using a USB device with a small body to eliminate interference.
5. The software update process is automatic. You will see the screens shown to the right during the process. When prompted, remove the USB drive from the display. The display will reboot into the updated software version.
6. Delete the files you copied to the USB drive. If you don't, you won't be able to use the USB drive for other CANTrak functions.

**The Color CANTrak is now updated with the latest software. The software also includes the latest software for the individual components that will be updated at a later time.**

Name	Type
app	File folder
firmware	File folder
images	File folder
recovery	File folder
README_HOW_TO_INSTALL	Text Document
usbboot	File
usbstick_update.ars	ARS File
usbstick_update.autorun	AUTORUN File

## Color CANTrak Folder Structure

Preparing For Update...

Updating - Please Wait...

Update Finished.  
Please Remove USB Stick.

# Optimus 360 Configuration and Commissioning

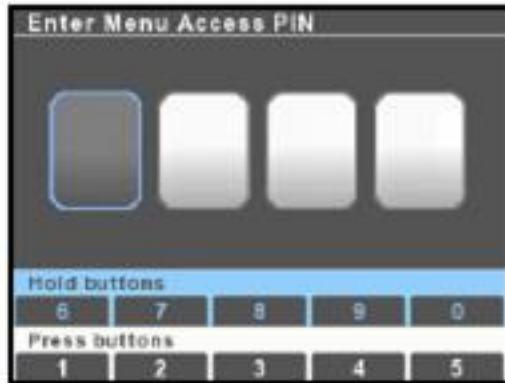


Figure D-5.

All setup and configuration tools are reached from the Dealer Menu, which authorized installers can access with a four digit PIN code (if you don't have a code contact SeaStar Solutions technical support). From the main run screen, press and hold **Menu** until you see the PIN entry screen.

Use the buttons to enter your four digit PIN code. Press the buttons briefly for digits 1-5, press and hold for digits 5-9.

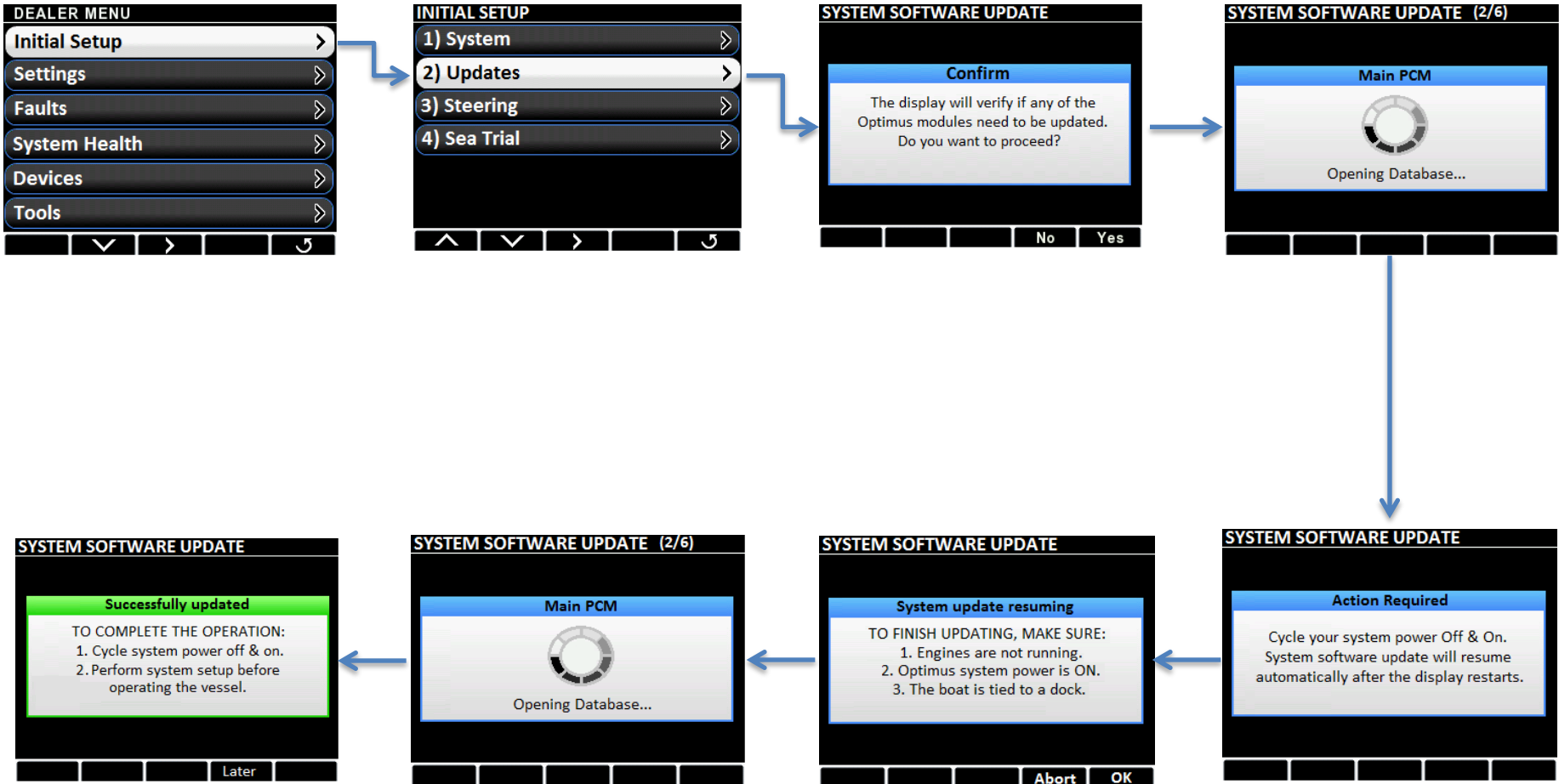
If you enter the code incorrectly you will exit the screen and be placed into the user menu. Press and hold **Menu** again to get back to the PIN entry screen.

Once you have entered the correct code you will go directly to the Dealer Menu. You won't need to enter the code again unless you cycle system power.

## NOTICE

*The Dealer Menu can be unlocked when faults are active. Faults are suppressed during setup and system updates.*

# Updating Component Software with Color CANTrak



# Updating Component Software with Color CANTrak

Software for the individual components can be updated through the Color display. When you perform a software update for the Color CANTrak, the latest version of the components software is loaded into the display. You will then perform a mass update for the remaining components.

## Procedure

1. Make sure the Color Cantrak display is up to date with the latest version of software from the “Optimusdealers.com” website.
2. Access the Dealer Menu by entering the four digit access code.
3. Navigate to the “**Initial Setup**” tab on the Dealer Menu.
4. Navigate to the “**Updates**” section of the menu.
5. The system will check all of the components on the network to verify if their software level is up to date. The system will alert you to components that do not have the latest level and ask if you would like to proceed. Select “**Yes**” to update all of the components that are on the CAN network.
6. Once completed, the screen will prompt you for two key cycles. This process writes the new software into the component.
7. After the final key cycle, login to the “**Dealer Menu**” and enter the device to make sure the software update was successful.

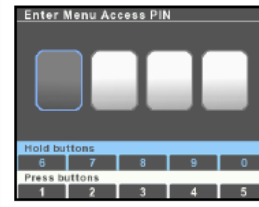


Figure D-5.

All setup and configuration tools are reached from the Dealer Menu, which authorized installers can access with a four digit PIN code (if you don't have a code contact SeaStar Solutions technical support). From the main run screen, press and hold **Menu** until you see the PIN entry screen.

Use the buttons to enter your four digit PIN code. Press the buttons briefly for digits 1-5, press and hold for digits 5-9.

If you enter the code incorrectly you will exit the screen and be placed into the user menu. Press and hold **Menu** again to get back to the PIN entry screen.

Once you have entered the correct code you will go directly to the Dealer Menu. You won't need to enter the code again unless you cycle system power.

## NOTICE

*The Dealer Menu can be unlocked when faults are active. Faults are suppressed during setup and system updates.*