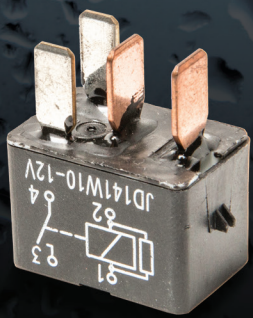


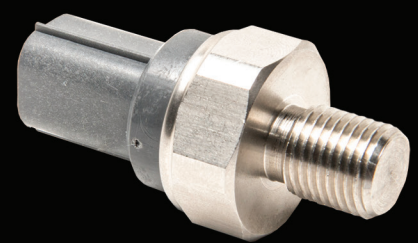


Sierra 50 Years

THE VERY BEST PARTS OF BOATING FOR OVER 50 YEARS



**2017
NEW PRODUCT
SUPPLEMENT**

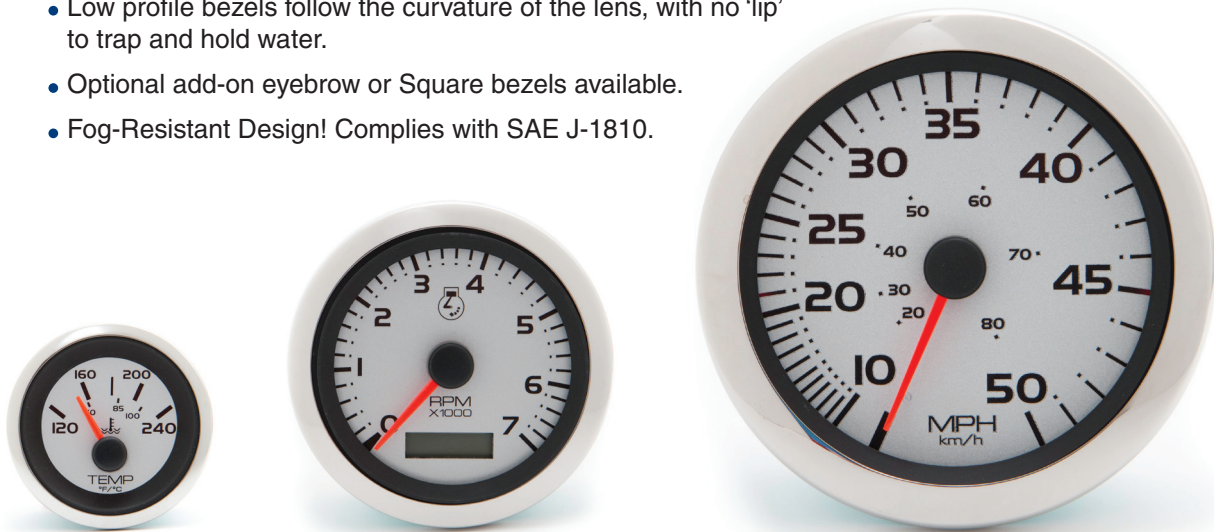


INSTRUMENTATION

ARGENT PRO GAUGES

FEATURES

- Translucent dial as well as into the pointer staff, provides the best in night visibility.
- Easy to read black graphics on a silver dial background.
- Domed scratch resistant glass lenses.
- Low profile bezels follow the curvature of the lens, with no 'lip' to trap and hold water.
- Optional add-on eyebrow or Square bezels available.
- Fog-Resistant Design! Complies with SAE J-1810.



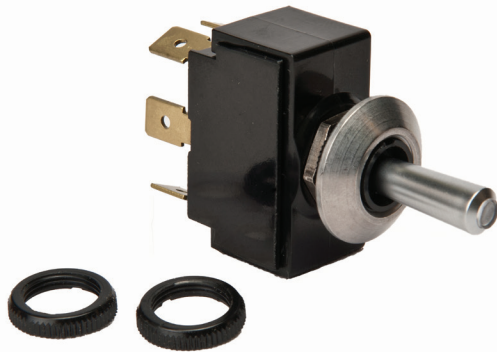
GAUGE DESCRIPTION	SIZE	DIAL RANGE	PART NUMBER
Fuel Gauge:	2"	E-1/2-F	65524P
Oil Pressure Gauge (Electric):			
Oil Pressure 80 PSI	2"	0-80 PSI	65526P
Oil Pressure 100 PSI	2"	0-100 PSI	65525P
GPS Speedometer:			
60 MPH (Head Only)	3"	0-60 MPH	781-294-060P
Speedometer Kits:			
50 MPH (Pitot type)	3"	5-50 MPH	65529P
50 MPH (Pitot type)	5"	5-50 MPH	65530P
70 MPH (Pitot type)	3"	20-70 MPH	65531P
Tachometers (Electric):			
O/B & 4-Stroke Gas Engines	3"	0-7000 RPM	65535P
O/B & 4-Stroke Gas Engines	5"	0-7000 RPM	65536P
Diesel Alternator	3"	0-4000 RPM	65537P
Tachometer/Hourmeter (Electric):			
O/B & 4-Stroke Gas Engines	3"	0-7000 RPM	65545P
Trim Gauges (Outboard, I/O):			
Evin/John/Suzuki 4-Stroke, 2002 & Up	2"	UP-DOWN	65547P
Mariner/Merc/Yamaha, 2001 & Up	2"	UP-DOWN	65548P
Voltmeter-12 Volt:	2"	10-16 VDC	65550P
Water Pressure Kit (Outboard):			
Each kit includes fittings & 20 feet of tubing)	2"	30 PSI	65551P
Water Temp. Gauge (I/O) (Electric):	2"	120-240°F	65553P

69053P
GPS RECEIVER (HIGH SPEED)
4 ft. long

- Highly sensitive receiver.
- Precise information output even when mounted under a fiberglass console or bimini top.
- Durable exterior.
- Updates 10 times per second to output accurate NMEA 0183 information.



SWITCHES



TG23050
TOGGLE SWITCH
(ON)-OFF (ON) DPDT

- Satin Chrome Handle with matching retaining ring
- Lights through tip of handle
- Non-corrosive plastic construction
- Illuminates white when panel lights are ON, changes to red when switch is ON
- Brass blade terminals, silver contacts
- 15/32" L X 13/32"-32 mounting stem
- Rated: 20 Amp @ 12 VDC

ACCESSORIES



18-9900
DIGITAL COMPRESSION TESTER

For Testing Compression on Gasoline powered engines.

- Stores max compression value for up to 12 cylinders
- Backlit LCD Display
- Auto Shutoff
- Sealed and Vibration protected
- Displays values in PSI, Bar, and kPa
- Fits many Outboard, Inboard, PWC, ATV, Recreational gasoline engines



**18-9902
DEEP WELL COMPRESSION TEST ADAPTER**

For deep well spark plug holes to perform compression testing. Works with 18-9900 compression tester.

- 14mm and 18mm threads.
- Reaches 8" beyond the installation surface.



**18-52206
FLUID DISPENSER/EXTRACTOR**

For removing/dispensing fluid in difficult to reach areas.

- No-drip cap.
- 7 oz. capacity.
- 7 1/2" flexible tube.



**18-52205
FLUID DISPENSER**

For easily dispensing fluids for any application.

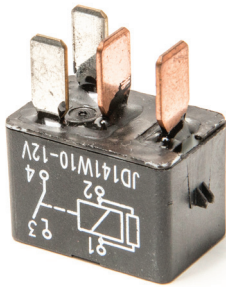
- Large 1.2 gallon capacity.
- Sealed internal pump components.
- Flow control valve equipped.
- Quick connect fittings.
- 20PSI Max Pressure.
- Includes pressure gauge.
- Integrated pressure relief valve.



**18-52207
TUBE KIT**

*Replacement tubes for oil extractors
18-52204 and 18-52104.*

ELECTRICAL



18-5731 RELAY, STARTER

Replaces: 38860-76F01

Fits: DF9.9 2005-2010, DF15 2005-2010, DF25 2006-2010, DF40 2003-2010, DF50 2003-2010, DF60 2003-2010, DF70 2003-2010, DF80 2009-2010, DF90 2003-2010, DF100 2009-2010, DF115 2003-2010, DF140 2003-2010, DF150 2006-2010, DF175 2006-2010, DF200 2004-2010, DF225 2004-2010, DF250 2004-2010, DF300 2007-2010

FUEL



18-79954 VST FILTER & GASKET KIT

Fits: Yamaha F225TLR (2007-2009), F250 (2005-2010), LF250 (2005-2010)

18-79955 VST FILTER & GASKET KIT

Fits: Yamaha F300 (2007-2009), LF300 (2007-2009), F350 (2007-2010), LF350 (2007-2010)



18-79956 VST FILTER & GASKET KIT

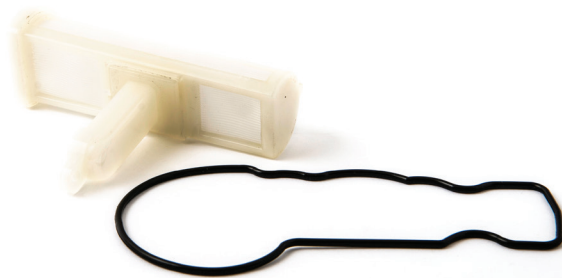
Fits: Yamaha F115 (2001-2014), F200 (2011-2014), F250 (2010-2014), F300 (2010-2014), F350 (2011-2014), FL250 (2010), FL300 (2010), LF115 (2011-2014), LF200 (2011-2014), LF225 (2010-2014), LF250 (2010-2014), LF300 (2010-2014), LF350 (2011-2014), VF150 (2013-2014), VF200 (2010-2014), VF225 (2010-2014), VF250 (2009-2014)



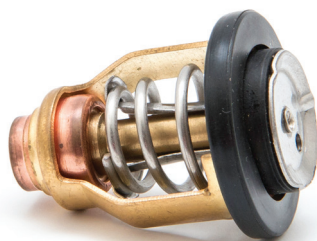
18-79957

VST FILTER & GASKET KIT

Fits: Yamaha F50 (2005-2014), F60 (2005-2014), F70 (2010-2014), F75 (2005-2014), F90 (2005-2014), T50 (2005-2014), T60 (2005-2014)



COOLING



18-3524

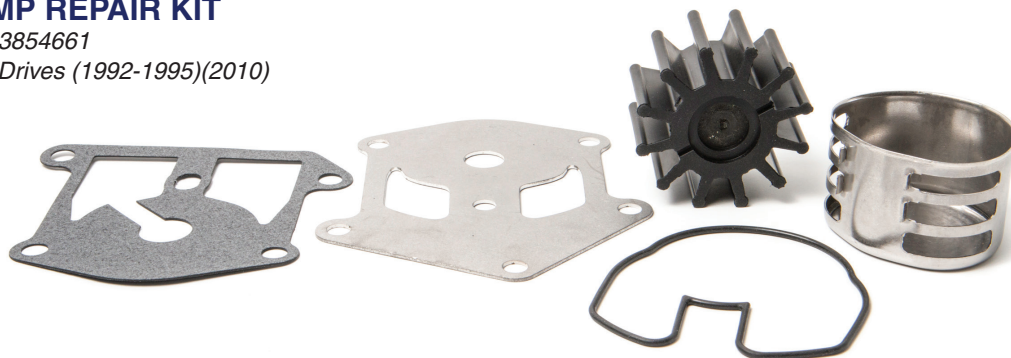
THERMOSTAT

*Replaces: Yamaha 6CE-12411-00-00
Fits: F225/LF225 (2010-2016), F250/LF250 (2010-2016), VF250 (2015), F300/LF300 (2010-2016), FL250/FL300 (2010)*

18-3469

WATER PUMP REPAIR KIT

*Replaces: OMC 3854661
For: King Cobra Drives (1992-1995)(2010)*



ENGINE MANAGEMENT



18-5894

OIL PRESSURE LIGHT SWITCH

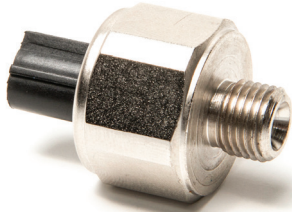
Replaces: OMC 0379948, Volvo: 3852215



18-7552

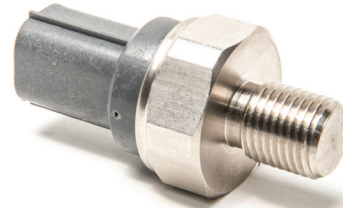
MAP SENSOR

Replaces: Honda 004-2006, BF135AK0, BF150A 2004-2006, BF150AK0, BF200A 2002-2006, BF200AK0, BF225A 2002-2006, BF225AK0



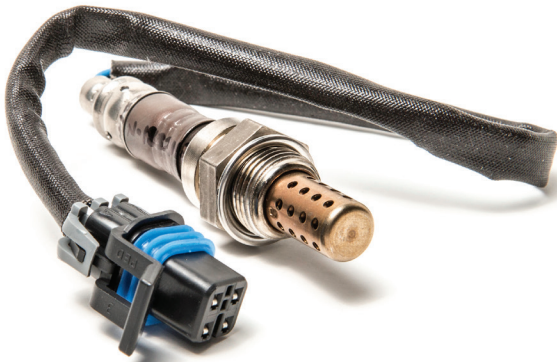
18-7558
KNOCK SENSOR

Replaces: Honda 30530-PPL-A01
Fits: BF135A 2004-2006, BF150 2004-2006



18-7559
KNOCK SENSOR

Replaces: Honda 30530-P8F-A01
Fits: BF200A 2002-2006, BF200AK0,
BF225 2002-2006, BF225AK0



18-32152
OXYGEN SENSOR

Replaces: Indmar / Malibu / Ilmor S556162
4-Wire; Used on ETXCAT Exhaust Manifolds
for both pre and post catalyst locations
(Except Ford 6.2L engines, sensor is used
post catalyst only).



18-32153
OXYGEN SENSOR

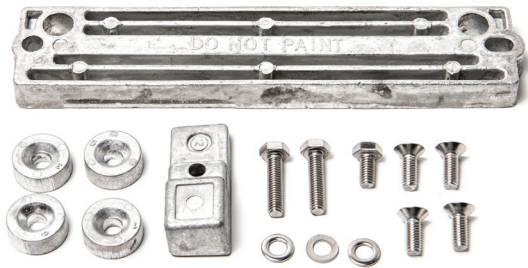
Replaces: Honda 35655-ZY3-C01,
35655-ZZ5-004
Fits: BF40D, BF50D, BF250A (1997 &
Prior), BF40DK2, BF50DK2, BF225AK1,
BF225AK2 (2007 & Up)



18-32154
OXYGEN SENSOR

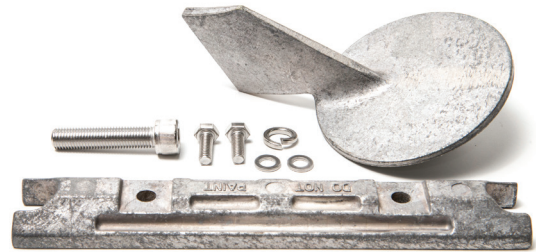
Replaces: Suzuki 18213-98J00
Fits: DF100A, DF115A, DF140A, DF250A,
(2011-Up), DF300 (2007-Up)

DRIVE



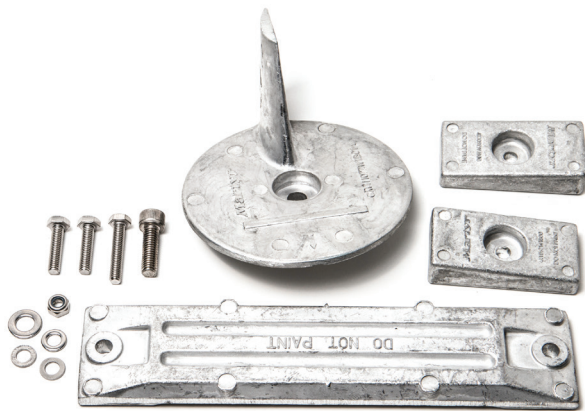
18-6161A (Aluminum)
18-6161M (Magnesium)
ANODE KIT

Fits: Suzuki 90-140HP Engines



18-6162A (Aluminum)
18-6162M (Magnesium)
ANODE KIT

Fits: Yamaha 60-90HP Engines



18-6163A (Aluminum)
18-6163M (Magnesium)
ANODE KIT

Fits: Honda BF90-115 Engines



18-6165A (Aluminum)
TRIM TAB ANODE

Replaces: Honda 41107-ZV5-00-00

Fits: BF25, BF30, BF35, BF45, BF50 (1997-Up)

DRIVE SYSTEM



Sierra  **50**
Years

**THE VERY BEST
PARTS OF BOATING
FOR OVER 50 YEARS.**