

OPTIMUS SEAWAYS QUICK REFERENCE CARD

SeaWays is an integrated autopilot for Optimus steering systems.

Please read your user's manual for detailed operation and safety information. Use the following as a guide to SeaWays operation.

SeaWays autopilot has three operational modes as follows:

HEADING MODE

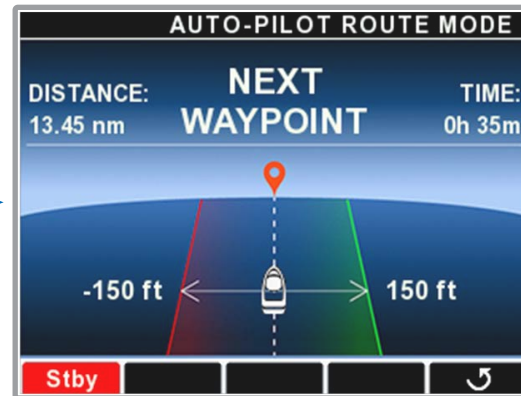
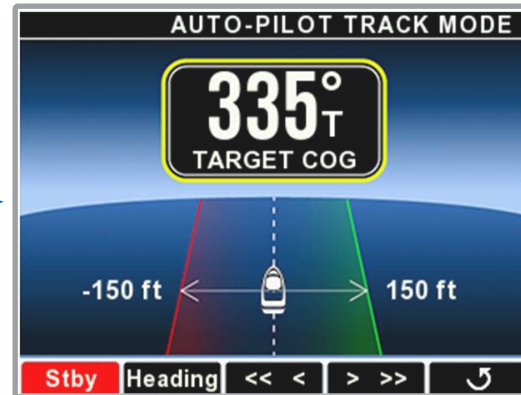
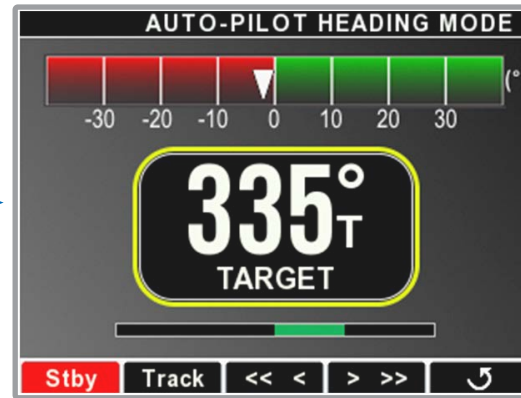
- Autopilot holds a desired heading.
- Boat may drift laterally with wind and current.
- Track mode can be toggle engaged.

TRACK MODE

- Autopilot holds a desired course over ground.
- Boat heading may be changed by the autopilot to hold the desired course.
- Heading mode can be toggle engaged.

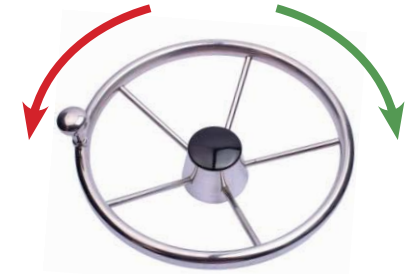
ROUTE MODE

- Autopilot follows waypoints provided by third party chart plotter.
- Boat heading will be changed by the autopilot to follow the waypoints.



STEERING OVERRIDE

Autopilot is temporarily disabled when the helm is turned.



For Heading and Track mode the autopilot re-engages automatically when the helm is no longer turned and the boat heading is stable. When the autopilot re-engages, the current heading becomes the new desired heading.

Using Route mode the autopilot will not re-engage until the "Route" button is pressed again.

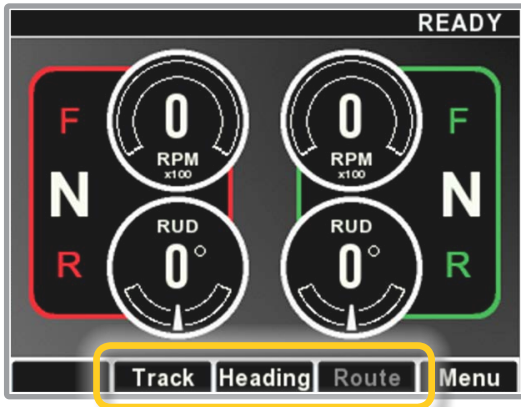
PLEASE KEEP ON BOAT

OVER

OPTIMUS SEAWAYS QUICK REFERENCE CARD

To Engage SeaWays

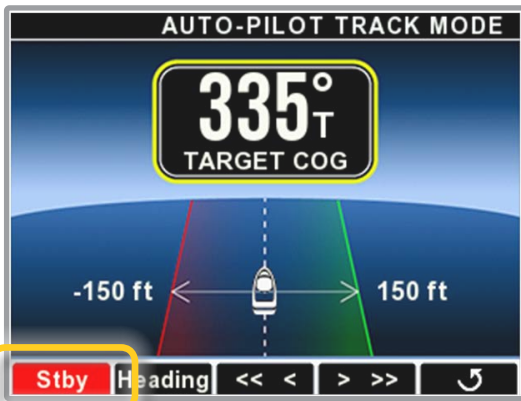
- From the run screen of the Optimus CANtrak display press button for “Heading”, “Track”, or “Route”.



Note: Route mode will not be available unless a route has been set and activated using a chartplotter.

To Dis-Engage SeaWays

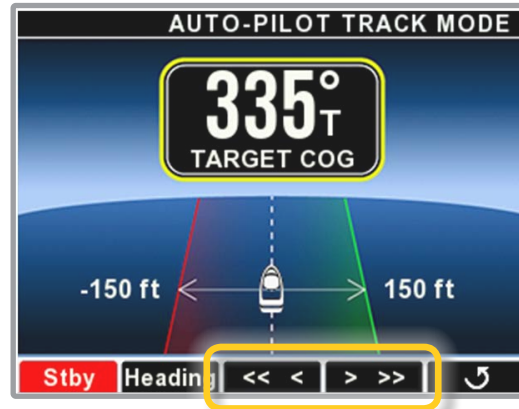
- From the run screen of the Optimus CANtrak display or any other Optimus autopilot screen press “Stby”.



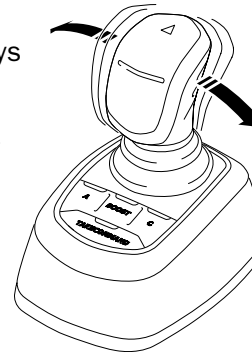
- SeaWays will automatically disengage if a 3rd party autopilot requests control.

Using Heading Jog

- From the Optimus CANtrak display’s autopilot screens “Heading” or “Track” press jog buttons for port or starboard heading change.
- Momentarily press jog buttons for 1 degree change. Press and hold for 10 degree change.



- If vessel is equipped with an Optimus joystick it can be moved sideways port or starboard to jog. Move joystick sideways momentarily for 1 degree change or hold sideways for 10 degree change.
- Heading Jog is not available when using Route mode.



⚠ WARNING

Do not use automatic steering when:

- At extreme speed
- In heavy traffic areas or in narrow waters
- In poor visibility or extreme sea conditions
- When in areas where use of autopilot is prohibited by law

When using an autopilot:

- Do not leave the helm unattended
- Verify the course and position of the vessel at regular intervals
- Always switch to Standby mode, and reduce speed in sufficient time to avoid hazardous situations

OVER

SEAWAYS
BY SEASTAR



©2018 Marine Canada Acquisition Inc.
PID# 682209B 04/18

SEASTAR
SOLUTIONS®

3831 No. 6 Road, Richmond,
B.C. Canada V6V 1P6
tech support: 604.248.3858
web: www.seastarsolutions.com