



SEASTAR™

i7700 NSP RELAY HARNESS

⚠ WARNING

Failure to adhere to the recommendations within this advisory notice may lead to loss of ignition control or shift and throttle control causing property damage and/or personal injury or death.

SeaStar Solutions has recently been made aware of cases where the Neutral Start Protection (NSP) feature of the i7700 Shift and Throttle Actuator (AC7700) may lose functionality. This will prevent the engines from being started even though they are in neutral.

These issues have been traced to the NSP circuitry within the i7700 Shift and Throttle Actuator. SeaStar Solutions recommends adding an additional harness CM20041 to the NSP system of the i7700 Shift and Throttle Actuator that will allow the user to safely start the engine.

Affected Units

SeaStar Solutions recommends this corrective action on all boats that utilize the NSP functionality of the i7700 Shift and Throttle Actuator.

Containment Practices

To prevent damage to the i7700 Shift and Throttle Actuator, adapt the engine ignition harness with the SeaStar Solutions CM20041 harness.

SeaStar Solutions recommends that the CM20041 harness is installed within the NSP wiring of the i7700 Shift and Throttle Actuator even where no issues have been reported.

Adaptation of Engine Ignition Harness

The flying leads of the CM20041 harness should be installed as per the labeling of Figure A below. It is recommended that the harness is installed using the supplied perma-seal connectors. Figure B shows how to make the connections for the CM20041 harness within the i7700 NSP circuit. **Note:** The yellow and red wires that previously activated the starter solenoid directly, are now an input signal for the relay within the CM20041 harness.

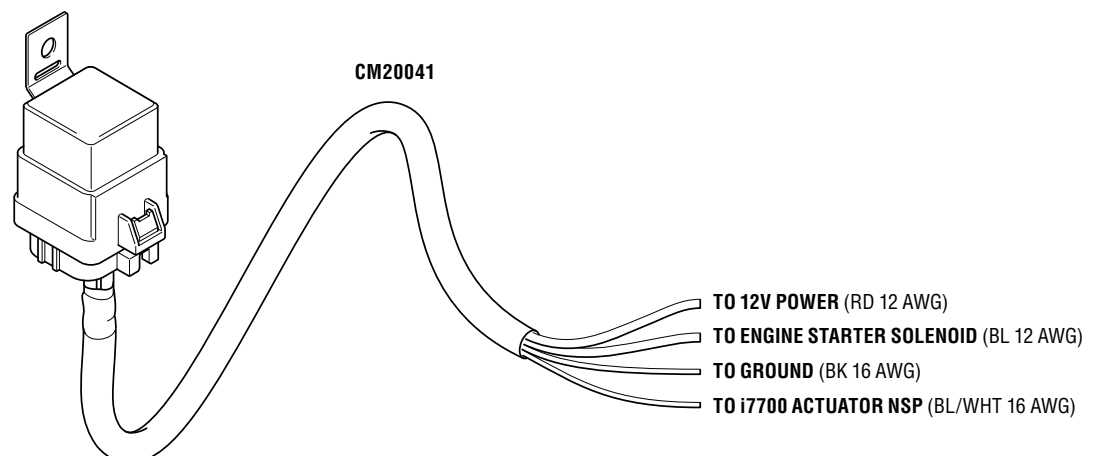


Figure A. CM20041 relay harness.

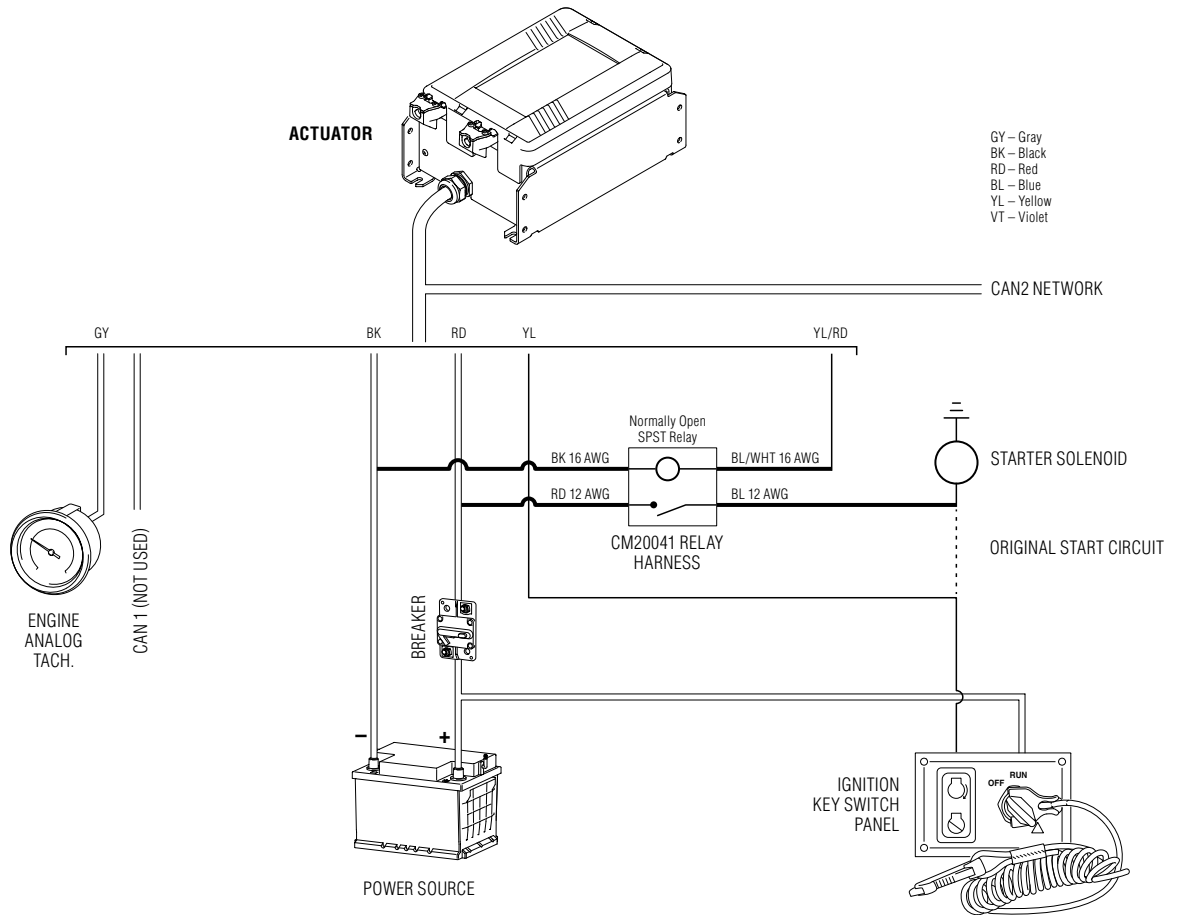


Figure B. New NSP wiring schematic including CM20041 relay harness.

System Verification Check

Once the outlined containment practices have been applied to the NSP of the i7700 Shift and Throttle Actuator but before operating the vessel, refer to the i7700 Shift and Throttle System Operations Instructions and User’s Manual (Book 77). Specifically, complete the Perform System Inspection and Initial Sea Trial.

When the system is powered on and the ignition switch is in the “on” position, ensure that activating the engine start switch starts the engines when the shift and throttle lever is in neutral. Further, ensure that the engine start switch does not start the engines when the shift and throttle lever is in gear.

Contact Information

If you have any questions or require the ignition adaptor harness, please contact SeaStar Solutions Technical Support in one of the following ways:

Email: seastar@seastarsolutions.com

Phone: 604-248-3858