

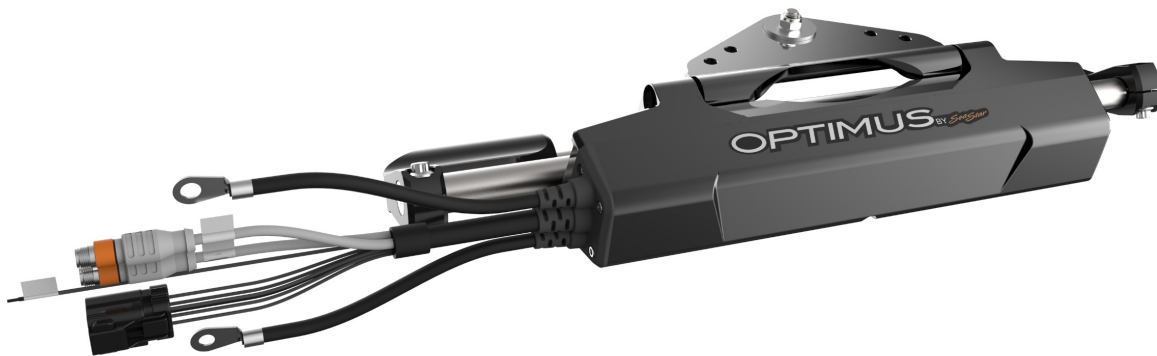
For Immediate Release

**NEW OPTIMUS ELECTRIC STEERING ACTUATOR FROM SEASTAR SOLUTIONS
SETS A NEW COURSE FOR STEERING CONTROL**

(Litchfield, IL – February 14, 2019) – SeaStar Solutions, now part of The Dometic Group, and the leader in marine steering and control systems, is ushering in a new era in steering and control with the introduction of their new SeaStar Optimus Universal Electric Steering Actuator. Incorporating proprietary technology and several new components designed and manufactured by SeaStar, this new actuator is built exclusively for use with their Optimus Joystick and Electric Power Steering Systems.

About the same size as the SeaStar Tournament Cylinder, the Optimus Electric Steering Actuator mounts directly on the outboard in place of the present hydraulic cylinder. With its powerful drive train, integrated proprietary position sensors and embedded electronics, it eliminates the need for separately-mounted hydraulic actuators used in the Optimus Joystick and EPS systems. This means no more Pump Control Module, no more hydraulic pump, no more hoses, hydraulic cylinders and fluid, and no more purging the system.

“At SeaStar, we are continually inventing ways to make boat building more efficient and boating more enjoyable,” said Eric Fetchko, President of Dometic Marine Americas. “Once again, SeaStar has taken marine steering to the next level. You have my word that we will never stop innovating and solving industry problems.”





Press Release

In terms of performance underway, ease of installation and season-after-season reliability, the new Optimus Electric Steering Actuator will provide substantial benefits to boat builder and skipper alike.

With the present system, the signal from the Optimus electronic helm goes to the Pump Control Module which activates an electro-hydraulic steering system. Even though it is “by-wire”, hydraulic fluid is still pumped through hoses and into the steering cylinders on the outboard(s) which act on the tiller arms of the outboards to move left or right.

With the new Optimus Electric Steering Actuator, the electronic helm signal goes directly to the actuator which instantly moves the outboard. The “brains” of the Pump Control Module, including ECM, rudder position circuit and CANbus communication, have been transplanted into the new Optimus Electric Steering Actuator itself. Steering power is delivered by a proprietary high-torque high-efficiency brushless DC electric motor, designed and manufactured by SeaStar, and a patented compact roller-screw drive system, also a proprietary SeaStar design. Both the motor and power train reside within the steering actuator.

In terms of steering performance, skippers will sense a difference in handling. Steering response will be immediate, smooth and precise, thanks to this robust, industry-leading drive train that provides unparalleled performance and system rigidity when needed most.

Programmable steering settings, including adjustable speed-sensitive lock to lock turns, adjustable speed-sensitive wheel effort, and speed-sensitive rudder angle limits to ensure safe steering, continue to be available, now without the need for any extra componentry.

Installation of the new system is a snap, with just three CANbus connections plus power. Twin, triple and quad outboard installations will be set up similar to the present design, with Optimus Electric Steering Actuators controlling adjacent outboards via tie-bars. In addition, the new Electric Steering Actuator will interface with compatible autopilot systems in the same manner as the present Optimus systems. SeaStar’s SeaWays Autopilot and SeaStation GPS Anchoring functionality are also built in.



Press Release

The SeaStar Optimus Electric Steering Actuator exceeds all applicable marine standards, including NMMA, ABYC, CE and SAE electrical and environmental requirements. The actuators are maintenance free, except for regular greasing of the steering ram via installed zerk fittings. Over 100,000 hours of rigorous testing during development assures safe and reliable performance under harsh salt and freshwater conditions, all in keeping with SeaStar's proven reputation for superior quality.

The new Optimus Electric Steering Actuator will be available in late 2019 to OEMs installing Optimus Joystick and Optimus EPS systems. For more information on SeaStar Optimus systems, or the many products SeaStar Solutions offers to boat builders and boaters, please visit www.seastarsolutions.com.

About Dometic

Dometic is a global market leader in branded solutions for mobile living in the areas of Climate, Hygiene & Sanitation and Food & Beverage. Dometic operates in the Americas, EMEA and Asia Pacific, providing products for use in recreational vehicles, trucks and premium cars, pleasure and workboats, and for a variety of other uses. Dometic offers products and solutions that enrich people's experiences away from home, whether in a motorhome, caravan, boat or a truck. Our motivation is to create smart and reliable products with outstanding design. We operate 28 manufacturing/assembly sites in 11 countries, sell our products in approximately 100 countries and manufacture approximately 85% of our products sold in-house. We have a global distribution and dealer network in place to serve the aftermarket. Dometic employs approximately 8,800 people worldwide, had a net sales of SEK 14.0 billion (\$1.7 billion USD) in 2017 and is headquartered in Solna, Sweden.

#

For more information contact
Rick Hauser P (805) 427-5259, E rickhauser@rickhausergroup.com