

MARINE PRODUCT FOCUS

A COMPREHENSIVE RANGE OF PRODUCTS FOR RECREATIONAL WATERCRAFT



HERE'S TO A LIFE AT SEA



STEERING, CONTROLS & CABLES

Bass Boat Solutions	2-3
Pro-Trim	4
Pro-Pedal	5
SeaStar Pro Steering	6
Jackplates	7-10
Xtreme Cables & Controls	11-16
HS5300 Tool Kit	17
Remote Bulkhead Fittings	17
SeaStar BOM Tool	18

MOBILE COOLING

Patrol	19
--------	----

PORTABLE SANITATION

Sanipottie	20
------------	----



**ONCE YOU
TRY OUR
PRODUCTS,
YOU'LL BE
HOOKED**

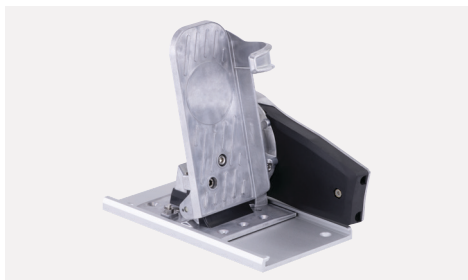
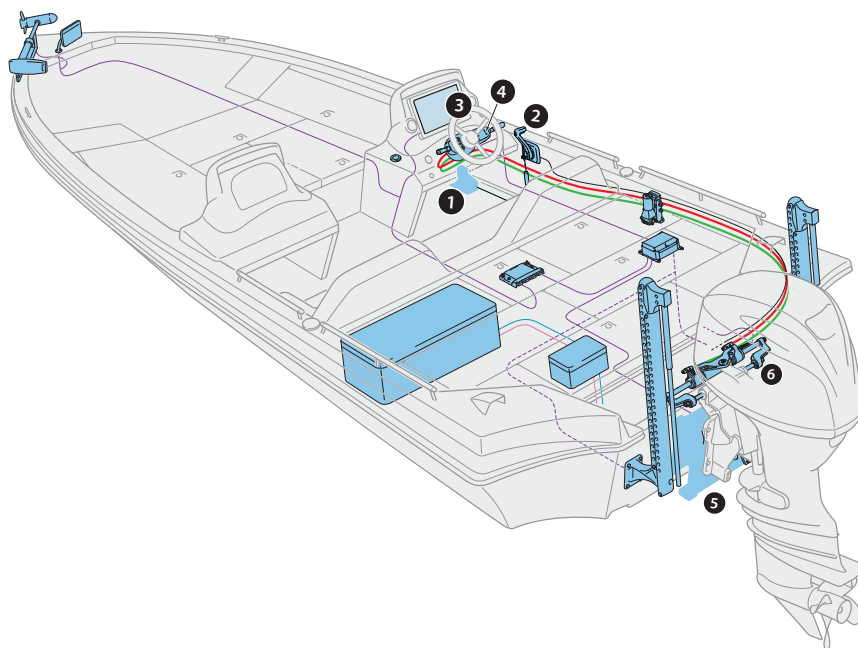


↗ DOMETIC

ULTIMATE CONTROL

PRODUCTS ENGINEERED TO HELP YOU GET TO THE PERFECT SPOT ON THE WATER

With over 75 years dedicated to command and control innovation, Dometic has become the leading, global provider of vessel control, fuel systems and system integration in the marine industry. As SeaStar becomes Dometic, we will continue this journey together and expand our portfolio of market leading marine solutions.



1. PRO-PEDAL FT7000P

Foot throttle with adjustable base plate



2. XTREME CONTROL CHX8050P

Side mount mechanical control



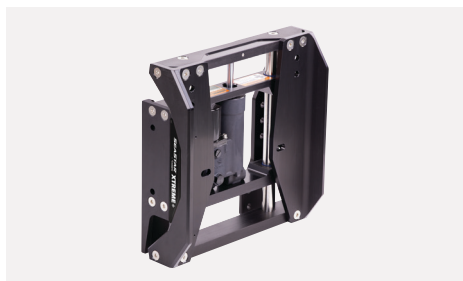
3. SEASTAR PRO HELM HH5271-3

Hydraulic steering helm



4. PRO-TRIM

Engine trim control



5. JACKPLATES

Improves speed and efficiency



6. SEASTAR PRO CYLINDER

Hydraulic steering cylinder

PRO-TRIM ENGINE TRIM CONTROL

TRIM CONTROL AT YOUR FINGERTIPS.

Trim control the way it's meant to be . . . at your fingertips. With Pro-Trim, you can keep both hands on the wheel and concentrate on your driving. Its clean, modern design looks at home in any cockpit and there are no cords to tangle around the steering wheel, a big plus for boats with hydraulic steering! The Pro-Trim single-switch controls one function (engine trim or jackplate) Pro-Trim Dual controls two functions (trim and jackplate).



Engine trim control - single or dual function.

Control any one of these functions... Engine Trim/Tilt, Jackplate, Horn... or any two with Pro-Trim Dual!

Pro-Trim is a "bolt-on" for most SeaStar Solutions steering systems and is attractively packaged, with everything you need.

Also suitable for use with Command 200 rack & pinion steering, and it's the only trim switch recommended for our hydraulic steering systems!

FEATURES

- Momentary-on switch is off in its center "at-rest" position; actuates in up and down directions
- UV-Stabilized ABS switch cover blends with dash
- Strong stainless steel bracket fits most steering systems and adjusts for regular or deep-dish wheels
- Heavy duty marine wiring harness, color-coded to match existing trim and jackplate wiring
- Durable Mylar® decals allow labelling of switch functions
- All mounting hardware and complete, user-friendly instructions included

ORDER INFO

PRO-TRIM CONTROLS	PART NO.
Pro-Trim Single Function	PT1000-1P
Pro-Trim Dual Function	PT2000-1P

Pro-Trim fits any boat using one of the following Dometic steering systems:

- Safe-T mechanical steering
- Rack & Pinion mechanical steering
- NFB No FeedBack steering (all helms)
- SeaStar hydraulic steering
- SeaStar PRO hydraulic steering
- Command 200 Rack & Pinion
- BayStar
- Sport, Sport Plus or Classic Tilt Mechanism

PRO-PEDAL

DRIVING A HIGH SPEED BASS BOAT TYPICALLY REQUIRES THE DRIVER TO KEEP BOTH HANDS ON THE WHEEL.

Dometic’s Pro-Pedal foot throttle offers some significant advantages in terms of customization and comfort in order to meet the individual requirements of the boat driver. Its compact design keeps the boat floor uncluttered and allows for more room around the pedal, and an integrated slide makes it easy to adjust the position for different drivers.

In use, the Pro-Pedal starts off at a comfortable 12.5° forward angle as opposed to a nearly vertical idle position found on competitive units. This allows the driver to place his foot in a more natural position at slower speeds or when idling.

The Pro-Pedal also allows for easy throttle travel adjustment. The patent-pending design allows the driver to set idle-to-WOT travel on the Pro-Pedal to match his individual ergonomics. Whatever travel length is set, the Pro-Pedal will always provide optimal idle-to-WOT throttle control based on engine type. This improves driver comfort and assures maximum performance.

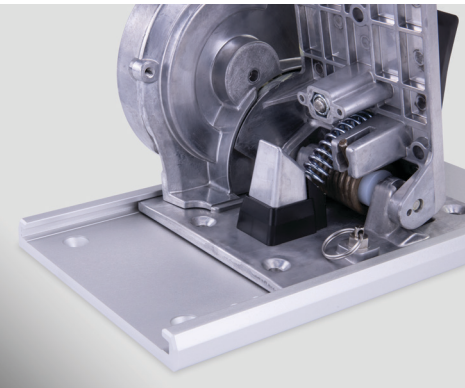
CUSTOMIZATION AND COMFORT

Driving a boat at high speed requires skill and experience, as well as precise control inputs. Boat drivers will appreciate the comfort and reliability of Dometic’s new Pro-Pedal.

- 12.5° angle, for a more comfortable foot position when operating at slow speeds.
- Robust torsion spring positioned at the hinge point of the throttle provides greatly improved reliability.
- Pedal position and travel can be easily adjusted to match the ergonomics of the driver while still providing full idle-to-WOT control.
- Locking fasteners hold a tight fit even under stress.
- The mechanism is “universal,” meaning it will accept any OEM style or 30 series sized cable.



DESCRIPTION	PART NO
Foot throttle with adjustable slider base plate	FT7000P
Foot Throttle	FT7050P
Slider base plate	FT7051P



EASILY ADJUSTABLE



SIMPLE INSTALLATION



LOCKING FASTENERS FOR
MAXIMUM RELIABILITY

SEASTAR PRO

THE ULTIMATE STEERING FOR HIGH SPEED OUTBOARD APPLICATIONS.



SEASTAR PRO STEERING (FRONT MOUNT CYLINDER) SYSTEM:

SeaStar PRO®, is designed for the high speed and performance of today's top-end bass boats. Recommended for single outboards up to 350 HP (even with jackplates and performance props), SeaStar PRO has steered the BASS Masters Classic® since 1994 and it's the choice of high performance outboard boatbuilders.



APPLICATIONS:

Seastar Pro is for high-performance boats with single non-power-assisted outboards up to 300 HP, especially those capable of speeds over 60 MPH, which demand maximum steering control and comfort. It is suitable for use with high-performance propellers and jack plates.

FEATURES:

- Patented steering lock valves.
- Low friction hydraulic steering system.
- 4.25 turns (with 2.0 CIR helm) from lock-to-lock.
- Compact helm has only a 4-7/16" footprint — needs only 3" dash hole (Tilt requires larger hole).
- PRO Cylinders with longer shaft bushings and larger pivot bushings for an even more solid feel!
- Optional hoses with through-bulkhead fittings; multiple helm mounting options
- Factory swaged hoses are Kevlar® reinforced.
- Packaged complete with helm, cylinder, fittings, oil, bleeder kit and detailed instructions.
- Standard 3/4" tapered steering shaft.
- Fast, easy installation.
- Meets A.B.Y.C. standards.
- Meets N.M.M.A. certification requirements.

SEASTAR JACKPLATES

JACKPLATES PROVIDE HIGHER SPEEDS, BETTER FUEL ECONOMY AND THE ABILITY TO RUN IN SHALLOW WATER.

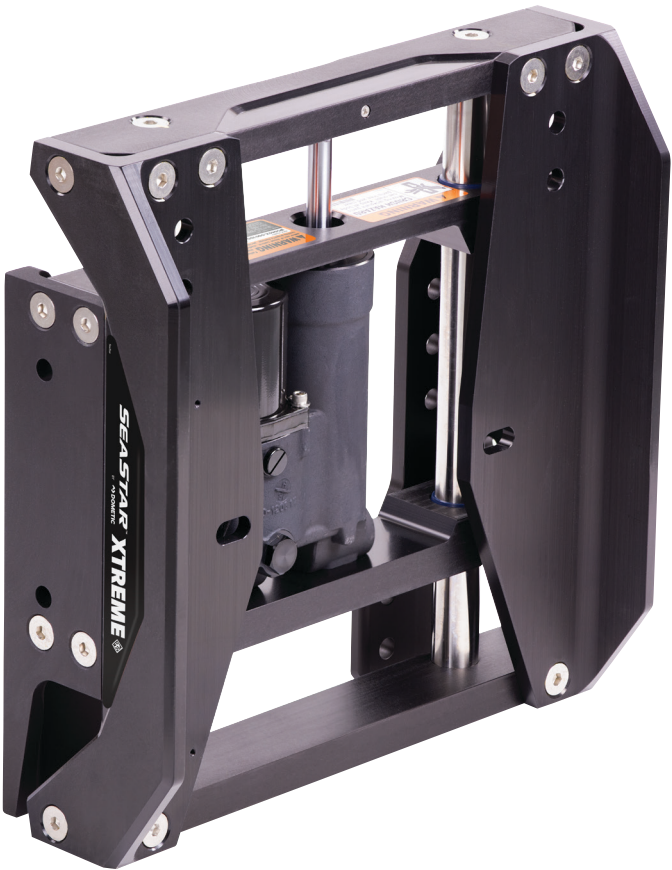


SEASTAR XTREME JACKPLATES
(RATED TO 400 HP):

The SeaStar Xtreme Jackplates utilize high strength materials to be able to handle some of the strongest engines on the water. The heavy duty frames are capable of handling engines up to 400 horse power. Designed with speed and durability in mind the Xtreme Jackplates can adjust the engine height in just 8.5 seconds, even while the boat is moving at full power.

FEATURES:

- Xtreme jackplate is using high strength materials and is easily capable of handling up 400 horsepower engines.
 - Rapid hydraulic response in 8.5 seconds.
 - Complete rigid engine support at full thrust.
 - Easily moves engine up or down at full thrust.
 - Smooth operation with composite bushings
 - Easy wrench access to engine bolts from the side
 - Compatible with Power Pole® and Talon®.
- * NOTE: JP5040X requires adapter kit DK4600 for Power Pole® or Talon® anchor systems mounting.



XTREME HYDRAULIC PLATE (UP TO 400 HP)	PART NO.
Hydraulic Jackplate 4" Xtreme	JP5040X*
Hydraulic Jackplate 6" Xtreme	JP5060X
Hydraulic Jackplate 8" Xtreme	JP5080X
Hydraulic Jackplate 10" Xtreme	JP5100X
Hydraulic Jackplate 12" Xtreme	JP5120X



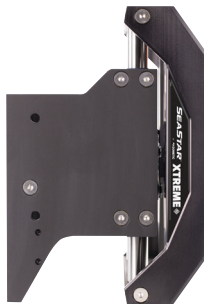
JP5040X
4" Setback



JP5060X
6" Setback



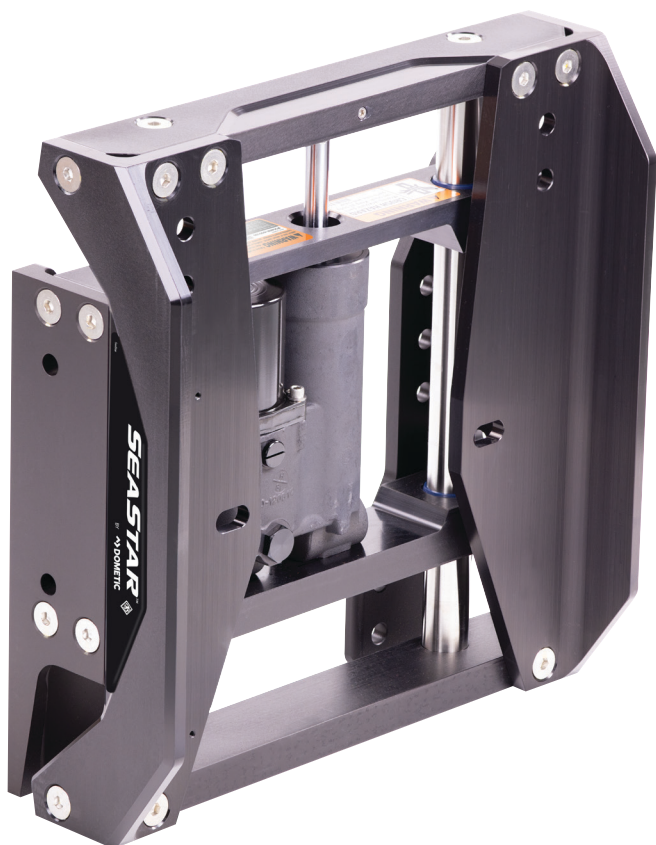
JP5080X
8" Setback



JP5100X
10" Setback



JP5120X
12" Setback



SEASTAR STANDARD JACKPLATES (RATED TO 300 HP):

The SeaStar Jackplate is one of the sleekest and most durable engine jackplates available. This essential performance accessory allows for higher speed, gains in fuel economy and the ability to run in shallow water. SeaStar Jackplate features sleek, bold styling that is redefining the look for Jackplates. The SeaStar Jackplate is rated for 300 horsepower and it is designed to maximize engine tilt when used with SeaStar steering cylinders.

FEATURES:

- Our standard jackplate is easily capable of handling up to 300 horsepower engines.
- Rapid hydraulic response in 8.5 seconds.
- Complete rigid engine support at full thrust.
- Easily moves engine up or down at full thrust.
- Smooth operation with composite bushings
- Easy wrench access to engine bolts from the side
- Compatible with Power Pole® and Talon®.

* NOTE: JP5040R requires adapter kit DK4600 for Power Pole® or Talon® anchor systems mounting.

STANDARD HYDRAULIC PLATE (UP TO 300 HP)	PART NO.
Hydraulic Jackplate 4" Standard	JP5040R*
Hydraulic Jackplate 6" Standard	JP5060R
Hydraulic Jackplate 8" Standard	JP5080R
Hydraulic Jackplate 10" Standard	JP5100R
Hydraulic Jackplate 12" Standard	JP5120R



JP5040R
4" Setback



JP5060R
6" Setback



JP5080R
8" Setback



JP5100R
10" Setback



JP5120R
12" Setback



SEASTAR MANUAL JACKPLATES

The JP1000 Series Jackplate comes in 4", 6", 8", and 10" setbacks to help you find the best match for your boat and optimize performance.

FEATURES:

- The interlocking slide guides offer enhanced strength while providing smooth, bind-free travel.
- The lead screw assembly sets the plate height and the Side Locks are used to hold the position.
- The stainless steel lead screw is resistant to corrosion and pre-greased for smooth operation.
- The maximum supported engine weight of 585 lbs is capable of handling the most demanding outboard engines, including the latest generation of 4-strokes.

MANUAL JACKPLATES	PART NO.
Manual Jackplate 4" Setback	JP1040SS
Manual Jackplate 6" Setback	JP1060SS
Manual Jackplate 8" Setback	JP1080SS
Manual Jackplate 10" Setback	JP1100SS



JP1040SS
4" Setback



JP1060SS
6" Setback



JP1080SS
8" Setback



JP1100SS
10" Setback

XTREME CONTROLS

ADVANCED BEYOND ANY OTHER MECHANICAL CONTROL ON THE MARKET.



STEERING, CONTROLS & CABLES

MOBILE COOLING

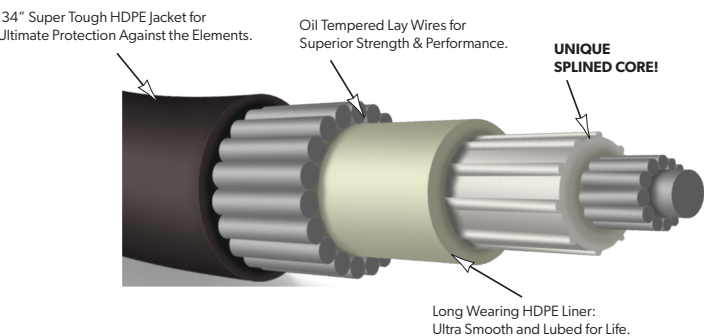
SANITATION

XTREME CONTROL CABLES

SPLINED CORE ALLOWS FOR SMOOTHER CONTROL WITHOUT SACRIFICING PRECISION.



CROSS SECTION OF CORE AND LINER: CORE HAS 10 CONTACT POINTS



REALLY DIFFERENT

Traditional cables vary by the stiffness of the core wire and how tightly it fits in the casing. Thus, the classic trade-offs that have existed in control cable design:

- A stiffer core/tighter fit offers less lost motion, but is harder to move. With longer and more complex runs, cable movement becomes progressively more difficult.
- More flexible core/looser fit has an easier feel, but allows more lost motion. This approach leads to an overall sloppy feel, RPM loss or difficult gear engagement.
- These trade-offs aren't an issue for cables with XTREME technology because they are different — really different!
- SeaStar Solutions' unique XTREME technology incorporates a patented splined core.
- Ridges on the core allow a close fit with the cable's inner liner, but with minimum contact, so the core glides back and forth smoothly like a skater on ice.

RESULT: a control cable with easy movement AND minimum lost motion.

XTREME CONTROL CABLES	PART NO.
Merc Gen II Type	CCX189XX
Merc Type (600A)	CCX179XX
OMC Type (479)	CCX205XX
3600 Merc Type	CCX630XX
3300CC Type (10-32 Threaded End)	CCX633XX
4300/43BC Type (1/4-28 Threaded End)	CCX430XX
4300/43CC Type (1/4-28 Threaded End)	CCX433XX
6400/64BC Type (5/16-24 Threaded End)	CCX640XX
6400/64CC Type (5/16-24 Threaded End)	CCX643XX



XTREME SIDE MOUNT:

XTREME side mount controls are the most sure handling and comfortable you can buy. The shapely, balanced grip provides a very smooth yet solid feel. This side mount control is designed for Starboard (right side) gunwale mounting only. These controls come with the standard features of neutral safety switch, neutral lock out, neutral warm up and the safety stop switch with lanyard. You can also get the optional trim switch (most outboards) or trim and tilt (most stern drives). These controls can not only use the 3300/33C style control cables, they can also use Mercury style cables from 1965 to date, including the Gen II, OMC/Johnson/Evinrude/BRP control cables from 1979 to date. This makes it one of the most desirable replacement controls in the market today.

APPLICATION:

Dual-function control — one lever controls throttle AND shift. For nearly any engine.

FEATURES:

- Superior feel and function for most outboards, stern drives & inboards.
- Dual function lever controls both throttle and shift of one engine.
- Neutral interlock and start-in-gear protection (standard).
- Optional Trim in the handle.
- Neutral engine warm-up feature (standard).
- Optional tilt switch available.
- Standard lanyard-style cut-off switch for emergency engine shutdown.
- Friction adjustment feature included.
- "Easy-On" cable design accepts virtually every type of OEM and 3300/33C type cable.
- Easily adapted to push or pull cable actuation mode.
- Mechanical advantage 2.38:1.
- Meets/exceeds all applicable standards.
- Made in the U.S.A.

**DOMETIC RECOMMENDS
USING XTREME CABLES
WITH THIS CONTROL**

NOTE: When properly installed, these engine controls will connect to outboard, stern drive and inboard engines, utilizing Mercury/Mariner® and OMC® OEM type control cables as well as universal 3300/33C type cables and engine connection kits.

ENGINE CONTROLS	PART NO.
XTREME Side Mount, Chrome, Engine Cut Off Switch	CHX8050P
XTREME Side Mount, Chrome with Engine Cut Off Switch, Trim Switch	CHX8051P
XTREME Side Mount, Chrome with Engine Cut Off Switch, Trim Switch, Tilt Switch	CHX8052P
XTREME Side Mount, Black, Engine Cut Off Switch	CHX8550P
XTREME Side Mount, Black, Engine Cut Off Switch, Trim Switch	CHX8551P
XTREME Side Mount, Black, Engine Cut Off Switch, Trim Switch, Tilt Switch	CHX8552P
XTREME Side Mount, Black	CHX8553P
XTREME Side Mount, Black, Trim Switch	CHX8554P
XTREME Side Mount, Black, Trim Switch, Tilt Switch	CHX8555P



XTREME CENTER CONSOLE:

The ergonomics and features of our Xtreme controls are advanced beyond those of any other control on the market.

A shapely, balanced handle design provides an incredibly smooth yet positive feel. Neutral interlock, throttle warm-up, and start-in-gear protection features are standard on all Xtreme Side mount models, with power trim/tilt, emergency cut off switches offered as an option. In addition, the cosmetics of these controls can be configured to suit many tastes on center console or port side mounted boats.

Xtreme center console controls are suitable for use with both 3300/33C universal or OEM type control cables without adaptation at the control.

APPLICATION:

Dual-function control — one lever controls throttle AND shift. For nearly any engine.

FEATURES:

- Superior feel and function for most outboards, stern drives & inboards.
- Dual function lever controls both throttle and shift of one engine.
- Neutral safety offers start-in-gear protection (standard). Optional Trim in the handle for each model.
- Neutral engine warm-up feature (standard).
- Optional tilt switch available.
- Friction adjustment feature included.
- “Easy-On” cable design accepts virtually every type of OEM and 3300/33C type cable.
- Easily adapted to push or pull cable actuation mode.
- Mechanical advantage 2.38:1.
- Meets/exceeds all applicable standards.
- Made in the U.S.A.

ENGINE CONTROLS	PART NO.
Single Top-Mount Control - Lever on the Right	
XTREME Side Mount, Chrome, Engine Cut Off Switch	CHX8350P
XTREME Side Mount, Chrome with Engine Cut Off Switch, Trim Switch	CHX8351P
XTREME Side Mount, Chrome with Engine Cut Off Switch, Trim Switch, Tilt Switch	CHX8352P
XTREME Side Mount, Black, Engine Cut Off Switch	CHX8850P
XTREME Side Mount, Black, Engine Cut Off Switch, Trim Switch	CHX8851P
XTREME Side Mount, Black, Engine Cut Off Switch, Trim Switch, Tilt Switch	CHX8852P

DOMETIC RECOMMENDS
USING **XTREME CABLES**
WITH THIS CONTROL

NOTE: When properly installed, these engine controls will connect to outboard, stern drive and inboard engines, utilizing Mercury/Mariner® and OMC® OEM type control cables as well as universal 3300/33C type cables and engine connection kits.



XTREME TOP MOUNT:

Xtreme top mount controls offer options that most top mount controls in the market do not. Options include trim (most outboards), trim and tilt (most stern drives) or the neutral lock out button. The lock out button is great for center console boats where there is a possibility the control can be bumped while passing by knocking it into gear. The standard items on these controls are the shapely and balanced hand grip that gives you a very smooth yet solid feel, the neutral safety switch, and the neutral warm up button. These controls can not only use the 3300/33C style control cables they can also use Mercury style cables from 1965 to date including the Gen II, OMC/Johnson/Evinrude/BRP control cables from 1979 to date. This makes it one of the most desirable replacement controls in the market today.

APPLICATION:

Dual-function control — one lever controls throttle AND shift. For nearly any engine.

FEATURES:

- Superior feel and function for most outboards, stern drives & inboards.
- Dual function lever controls both throttle and shift of one engine.
- Neutral safety offers start-in-gear protection (standard).
- Optional Trim in the handle for each model.
- Neutral engine warm-up feature (standard).
- Optional tilt switch available.
- Friction adjustment feature included.
- “Easy-On” cable design accepts virtually every type of OEM and 3300/33C type cable.
- Easily adapted to push or pull cable actuation mode.
- Mechanical advantage 2.38:1.
- Meets/exceeds all applicable standards.
- Made in the U.S.A.

DOMETIC RECOMMENDS
USING **XTREME CABLES**
WITH THIS CONTROL

NOTE: When properly installed, these engine controls will connect to outboard, stern drive and inboard engines, utilizing Mercury/Mariner® and OMC® OEM type control cables as well as universal 3300/33C type cables and engine connection kits.

ENGINE CONTROLS	PART NO.
Single Top-Mount Control - Lever on the Left	
XTREME Top Mount, Chrome	CHX8140P
XTREME Top Mount, Chrome, Trim Switch	CHX8141P
XTREME Top Mount, Chrome, Trim Switch, Tilt Switch	CHX8142P
XTREME Top Mount, Chrome, Neutral Interlock	CHX8150P
XTREME Top Mount, Chrome Neutral Interlock, Trim Switch	CHX8151P
XTREME Top Mount, Chrome, Neutral Interlock, Trim Switch, Tilt Switch	CHX8152P
XTREME Top Mount, Black	CHX8640P
XTREME Top Mount, Black Trim Switch	CHX8641P
XTREME Top Mount, Black Trim Switch, Tilt Switch	CHX8642P
XTREME Top Mount, Black Neutral Interlock	CHX8650P
XTREME Top Mount, Black Neutral Interlock, Trim Switch	CHX8651P
XTREME Top Mount, Black Neutral Interlock, Trim Switch, Tilt Switch	CHX8652P



XTREME DUAL TOP MOUNT:

The ergonomics and features of our controls are the most advanced available and are suitable for most types of boat with dual engine applications. The shapely, balanced handle provides a very comfortable feel and the state of the art mechanism guarantees a smooth yet solid action, assuring you have maximum control at all times. This control is designed for twin engine applications. XTREME dual top mount controls are suitable for use with both universal type (3300) or OEM type control cables without the need for adaptation.

These controls not only use the 3300/33C style control cables they can also use Mercury style cables from 1965 to date including the Gen II, OMC/Johnson/Evinrude/BRP control cables from 1979 to date. This makes it one of the most desirable replacement controls in the market today.

FEATURES:

- Superior feel and function for most outboards, stern drives & inboards.
- All controls include start in gear protection.
- Designed for use with both universal and OEM shift and throttle cable connections.
- Suitable for most boat/dual engine combinations.
- Dual action levers (throttle and shift control in each handle).
- Trim, Tilt, options available.
- Drag adjustment on all models.
- Easy installation and set up.
- Throttle friction adjustment is included for each handle.

ENGINE CONTROLS	PART NO.
XTREME Dual Top Mount, Chrome	CHX8240P
XTREME Dual Top Mount, Chrome, Trim Switch	CHX8241P
XTREME Dual Top Mount, Chrome, Trim Switch, Tilt Switch	CHX8242P
XTREME Dual Top Mount, Black	CHX8740P
XTREME Dual Top Mount, Black, Trim Switch	CHX8741P
XTREME Dual Top Mount, Black, Trim Switch, Tilt Switch	CHX8742P
Neutral Safety Switch	051801-033

**DOMETIC RECOMMENDS
 USING XTREME CABLES
 WITH THIS CONTROL**

NOTE: When properly installed, these engine controls will connect to outboard, stern drive and inboard engines, utilizing Mercury/Mariner® and OMC® OEM type control cables as well as universal 3300/33C type cables and engine connection kits.

HS5300 HEAVY DUTY CYLINDER SERVICE KIT

END GLAND / BLEEDER WRENCH SERVICE KIT

Designed to make servicing the hydraulic cylinder easier. This is a perfect tool kit for a dealer mechanic who works on SeaStar steering systems on a regular basis.

FEATURES

- Heavy-Duty bleeder wrench designed to reach cylinder bleeder fittings in tight spaces.
- Heavy-Duty end gland pin wrench intended to easily remove end gland during servicing. Adaptable to fit 4-hole and 8-hole end glands.
- Kit includes bleeder wrench, end gland wrench pin and instruction sheet.
- Saves you money as you can now purchase the service kits without the older 2 pin wrenches.



REMOTE BULKHEAD FITTINGS

Our remote bulkhead fittings offer boaters a simple solution to cleanly route hoses through the hull while maintaining safety and aesthetics. Dometic's remote bulkhead fittings come in both single and dual hose applications for ultimate customization. Stainless steel options provide cleaner styling and corrosion resistance while blending in with your boat's stainless trim.

FEATURES

- Split grommet
- Split pigtail with snap fit tabs
- Increased inner diameter of plastic base plate simplifies fitting installation.
- Stainless steel cover plates available for both single and dual applications



PART NO	DESCRIPTION
HO7100	Single, Stainless
HO7105	Single, Plastic
HO7200	Dual, Stainless
HO7205	Dual, Plastic

SEASTAR BOM TOOL

FIND THE COMPONENTS YOU NEED

We have created a powerful, intelligent tool to help you quickly make steering selection decisions. The SeaStar Steering selector provides accurate and complete data in a way that makes it easy to find the components you need. This easy-to-use application will generate a bill of materials for SeaStar, BayStar, and Power Assisted hydraulic steering systems. The output is our recommended setup based on your input

FEATURES

Determine the perfect setup for:

- Pontoon boats
- Bass boats
- Single engine boats
- Twin engine with tiebar
- Twin engine with twin cylinders
- Hydraulic parts lookup

www.seastarbom.com



DOMETIC PATROL HIGH PERFORMANCE COOLERS

DEMAND MORE FROM YOUR COOLER!

The Dometic Patrol coolers are built to last trip after trip with thick PU insulated walls, single piece rotomolded construction, and a full-length hinge pin. Our coolers are more than just a box to put ice in – smart features like a leak proof drain, deep-freeze lid seal, and one-hand rubber latches make the Patrol coolers an ultra-functional product! We even care about what’s inside, using environmentally friendly C5 insulation which reduces GHG emissions over 90% compared to its replacement. With a Patrol cooler you are ready for any adventure!

KEY BENEFITS

- Robust rotomolded polyethylene construction withstands tough conditions
- Deep-freezer seals with thick PU insulation keeps ice cold for days
- Leak-proof drain for easy cleaning
- Lid firmly closed using one-handed rubber latches
- Durable, ergonomic rubber handles
- Full length lid hinge



MODEL	PATROL 20	PATROL 35	PATROL 55	PATROL 75
Ref. No.	960-0006279	960-0006280	960-0006281	960-0006282
Storage volume (qt/Cans) * with 2-1 ice ratio	20 qt 15 cans	35 qt 28 cans	55 qt 43 cans	75 qt 58 cans
Outter dimensions (D x H x W, in)	14.25 x 15.50 x 21.13 in	16.88 x 16.00 x 27.75 in	19.13 x 17.13 x 30.13 in	19.13 x 18.25 x 35.38 in
Weight with basket (lbs approx.)	17.55 lbs	25.75 lbs	33.06 lbs	38.18 lbs
Material	One-piece rotomolded polyethylene			

SANIPOTTIE PORTABLE TOILETS

CONVENIENCE OF HOME, ANYWHERE YOU TRAVEL

The 960 series of convenient portable toilets have long been relied upon by recreational boat users. Simple to use, available in two colours and self-contained, these adult-sized toilets have a bellows style flush for a reassuringly clean rinse every time.

STRONG AND DURABLE

With high-density polyethylene construction, SaniPottie 960 series portable toilets have withstood the rugged demands of boaters and campers for more than 30 years. Their lightweight portability and easy-to-use features make them a camping favorite all over the world.

KEY BENEFITS

- High-density polyethylene construction withstands demanding conditions
- Easy-to-clean, scratch-resistant finish
- Secure-locking side latches
- Available with 2.5 or 5.0 gal. waste tank



Model	962	964	965MSD	965	965MSD	966
Description ¹	2.5 gal/9.51 capacity portable toilet	2.5 gal/9.51 capacity portable toilet, mounting bracket	2.5 gal/9.51 capacity portable toilet, mounting brackets, MSD fittings	5.0 gal/18.91 capacity portable toilet, mounting brackets, MSD fittings	5.0 gal/18.91 capacity portable toilet, mounting brackets, MSD fittings	5.0 gal/18.91 capacity portable toilet
Discharge	Manual	Manual	1.5 in/38 mm ID plumbing	Manual	1.5 in/38 mm ID plumbing	Manual

¹ Mounting brackets are also available as separate accessory kits for 962 and 964 models.



SECURE PORTABILITY

Firm-locking side latches assure worry-free portability



NO-HASSLE CLEANING

Easy-to-clean, scratch-resistant finish makes it easy to keep looking like new



STRON AND DURABLE

High-density polyethylene construction

↗ DOMETIC
**MOBILE LIVING
MADE EASY.**



Mobile living made easy.



DOMETIC

1 Sierra Place
Litchfield, IL 62056
Phone: 877-663-8396
Fax: 217-441-8340

Printed in the U.S.A.

dometic.com

CATALOG-DOMSUP



Marine Supplement | Rev. 08.24.20