

MARINE PRODUCT FOCUS

A COMPREHENSIVE RANGE OF PRODUCTS FOR RECREATIONAL WATERCRAFT



 **DOMETIC** **OUTDOOR**



POWER & CONTROL

Enjoy peace of mind out on the water. Our range of steering systems, accessories and add-ons ensure you'll always be comfortably in command of your vessel.

PAGES 2 - 11



FOOD & BEVERAGE

Cook what you like, eat with friends, keep your provisions nice and fresh throughout the journey. We have taken care of every detail.

PAGES 12 - 23



HYGIENE & SANITATION

Enjoy a pleasant feeling of freshness on board wherever the road takes you. Reap the benefits of our decades of research into mobile sanitation systems.

PAGES 24 - 29

POWER & CONTROL

Xtreme Power Assist	4
BayStar Plus Steering	5
SeaStar Standard Trim Tab System	6 - 7
Pro-Pedal	8
Remote Bulkhead Fittings	9
Power Purge Jr.	10-11
SeaStar BOM Tool	11

FOOD & BEVERAGE

CFX3 Series Powered Coolers	14-15
Patrol Coolers	16
Eskimo Cup Refrigerated Cup Holder	17
CRX Series 3-in-1 Refrigerators	18 - 19
CRXD Series Drawer Refrigerators	20 - 21
CD Series Drawer Refrigerators	22
CB Series Top-Loading Refrigerators	23

HYGIENE & SANITATION

Masterflush 7000 Series Macerator Toilets	26
Sanipottie 970 Series Portable Toilets	27
Sanipottie 960 Series Portable Toilets	28

DOMETIC ON THE WEB

Here's where you can find the complete Dometic range, with detailed information about all products. Plus, interesting facts about our company and download links for all our catalogs.

dometic.com

POW CON



ER & TROL



DOMETIC XTREME POWER ASSIST

SMOOTH FINGERTIP STEERING.

EXPERIENCE SMOOTH HANDLING WITH YOUR CURRENT MECHANICAL STEERING SYSTEM

The Xtreme Power Assist Steering is engineered to bring the smooth, easy control of electric power-assisted steering to a wide range of popular boats, including pontoons, runabouts, RIBs, aluminum fishing boats and center consoles. This is an affordable, easy-to-install solution that offers a more enjoyable driving experience.

STRONG AND DURABLE

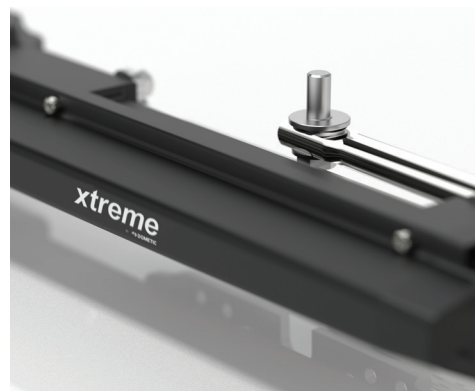
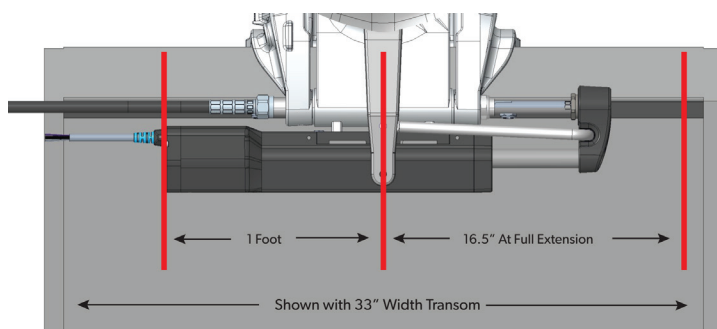
This system differs vastly from competitive “electric helm” systems on the market, because it does not increase the load on the mechanical steering helm or cable. Once this system is installed, the mechanical steering cable now only turns the power assist unit, while the electric steering actuator actually turns the engine load. This ensures reliable long-term performance in real-world, on-the-water conditions.

KEY BENEFITS

- Significantly reduced steering effort provides a car-like driving experience for mechanically steered boats.
- Engineered to fit a wide range of single engine, mechanically steered outboard boats from 90-200HP.
- Integrates with any existing SeaStar rack or rotary cable steering system, so there is no need to install new steering to take advantage of this new technology.
- Designed as a self-contained, plug-and-play system which easily mounts to all major outboard brands and integrates with the boat's existing mechanical steering in less than 30 minutes.
- Built in Fail-safe System automatically reverts to mechanical steering in the event of a system failure.



Part No.	Description
XPA1012P	Xtreme Power Assist



REDUCED STEERING EFFORT

SIMPLE INSTALLATION
Plug-And-Play system

SAFE AND SECURE
Built in fail-safe system

DOMETIC BAYSTAR PLUS STEERING SYSTEM

HYDRAULIC STEERING PERFORMANCE FOR THE LOWER HP RANGE.

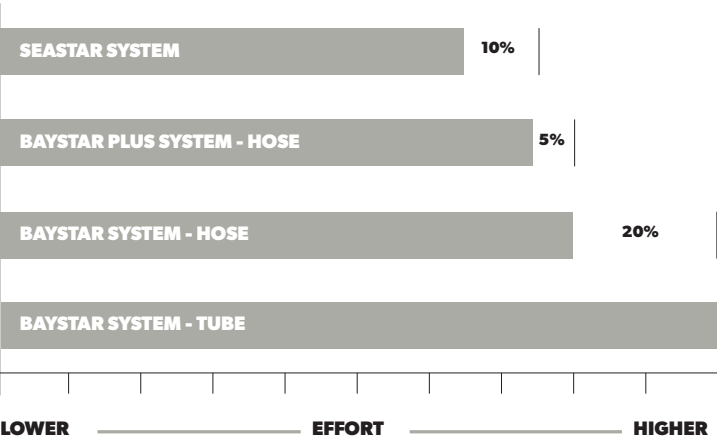


Dometic BayStar Plus provides hydraulic steering performance for the lower horsepower range. Tilt option is available.

Effort Reduction — Dometic has recently updated the BayStar cylinder. These updates include low friction main piston seals as well as low friction wiper and gland seals.

Notice: BayStar Plus is not recommended for use in the following applications;

- Pontoon boats
- High speed Single Engine Boats, Such As Flats, Bass or Race/Ski Combination
- High Performance 150 HP Engine



FEATURES

- Patented No FeedBack™ Steering lock valves
- 5 turns lock-to-lock
- Up to 150 horsepower (total)
- Available either as separate components or as a complete system ready to install
- Fixed cylinder
- Tilt option available
- Requires 3" (76mm) cut-out hole in dash
- Requires 21" (534mm) splashwell width

ORDER INFORMATION

DOMETIC BAYSTAR PLUS STEERING KIT (HK4500A-3 -see footnote)

Helm	Cylinder	Hoses	Fluid (2 Bottles)
HH4514-3	HC4645-3	HO51xx*	HA5430

*Must be ordered separately. xx - length in feet.
ONLY Dometic SeaStar/Baystar hose/tube recommended. ONLY Dometic SeaStar/Baystar Fluid recommended.

SEASTAR STANDARD TRIM TAB SYSTEM

A SMART CONTROLLER THAT KEEPS YOU DIALED IN.

TACTILE SWITCHES CANNOT PROVIDE THE PRECISION THAT BOATERS DEMAND

The INTUITIVE dial makes it super easy to plane your boat quickly by providing instant feedback and a superior user experience.

- Turn the dial in the direction you want to level the boat and the actuators will move quickly to level the boat
- Favorites button makes it easy to plane your boat with previously set tab position
- Single press bow up and bow down along with auto home makes it very simple to get the desired boat planing position



Part No.	Description
STT3103R	Kit - 2.25" Stroke, 11.5" Standard Actuator & Control, 9" x 12" Standard Trim Tabs
STT3105R	Kit - 2.25" Stroke, 11.5" Standard Actuator & Control, 12" x 12" Standard Trim Tabs
STT3205R	Kit - 2.25" Stroke, 11.5" Standard Actuator & Control, 12" x 12" Edge Mount Trim Tabs
STT3207R	Kit - 2.25" Stroke, 11.5" Standard Actuator & Control, 9" x 12" Edge Mount Trim Tabs
STT3601R	Kit - 2.25" Stroke, 11.5" Standard Actuator & Control, No Tabs
STT3701R	Kit - 4.25" Stroke, 13" Standard Actuator & Control, Harness, No Tabs

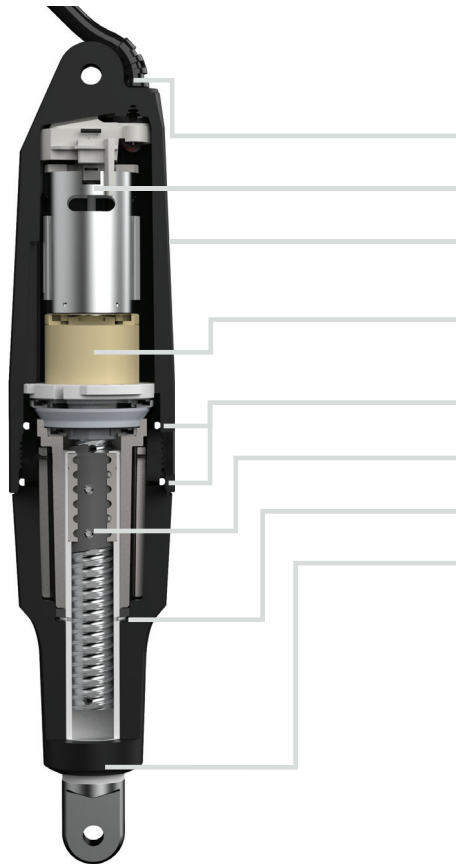
STANDARD DIAL CONTROLLER



- Performance Technology LEDs - Indicate position of trim tabs
- Auto Brightness - Will sense ambient light and adjust brightness
- Bow Down Button - Quickly move port and starboard tabs to desired position
- Power Indicator - Indicates there is power to the system. LED will indicate if there is an error
- Home Button - Quickly move both tabs to the home position
- Favorite Button - Hold for 3 seconds to save desired tab position
- Bow Up Button - Quickly move port and starboard tabs to desired position
- Intuitive Technology - Turn smart dial to quickly level your boat

ENGINEERED FOR DURABILITY

ALL ELECTRIC DESIGN REDUCES COMPLEXITY AND INCREASES RELIABILITY.



ACTUATOR

- Sealed and potted wiring
- High torque DC motor
- Rugged & stylish housing, simple 2 piece design minimizes possible water ingress points
- Planetary gearbox provides ultra efficient and reliable high load transfer and quiet operation.
- Dual housing seals to prevent leakage
- Free wheeling ball screw technology
- Rear seal in protected bushing area
- Wiper removes particles from shaft and protects rear seal

TRIM TABS



- Heavy duty 12 GA 304 stainless steel tabs, Optional electro polished
- Trim tab kits contain marine grade stainless steel 316 fasteners
- Thick 1/4" hinge pin for added strength
- Heavy duty 14 GA stainless steel hinge to ensure robust tab performance
- Custom tabs available

PRO-PEDAL

DRIVING A HIGH SPEED BASS BOAT TYPICALLY REQUIRES THE DRIVER TO KEEP BOTH HANDS ON THE WHEEL.

Dometic's Pro-Pedal foot throttle offers some significant advantages in terms of customization and comfort in order to meet the individual requirements of the boat driver. Its compact design keeps the boat floor uncluttered and allows for more room around the pedal, and an integrated slide makes it easy to adjust the position for different drivers.

In use, the Pro-Pedal starts off at a comfortable 12.5° forward angle as opposed to a nearly vertical idle position found on competitive units. This allows the driver to place his foot in a more natural position at slower speeds or when idling.

The Pro-Pedal also allows for easy throttle travel adjustment. The patent-pending design allows the driver to set idle-to-WOT travel on the Pro-Pedal to match his individual ergonomics. Whatever travel length is set, the Pro-Pedal will always provide optimal idle-to-WOT throttle control based on engine type. This improves driver comfort and assures maximum performance.

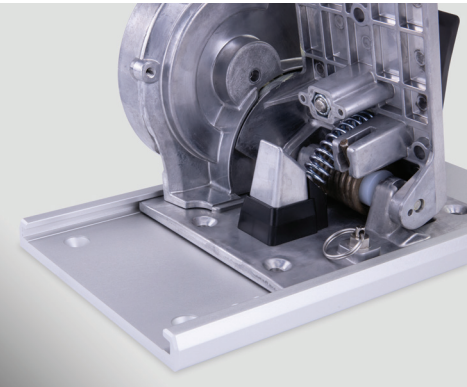


CUSTOMIZATION AND COMFORT

Driving a boat at high speed requires skill and experience, as well as precise control inputs. Boat drivers will appreciate the comfort and reliability of Dometic's new Pro-Pedal.

- 12.5° angle, for a more comfortable foot position when operating at slow speeds.
- Robust torsion spring positioned at the hinge point of the throttle provides greatly improved reliability.
- Pedal position and travel can be easily adjusted to match the ergonomics of the driver while still providing full idle-to-WOT control.
- Locking fasteners hold a tight fit even under stress.
- The mechanism is "universal," meaning it will accept any OEM style or 30 series sized cable.

DESCRIPTION	PART NO
Foot throttle with adjustable slider base plate	FT7000P
Foot Throttle	FT7050P
Slider base plate	FT7051P



EASILY ADJUSTABLE



SIMPLE INSTALLATION



LOCKING FASTENERS FOR MAXIMUM RELIABILITY

REMOTE BULKHEAD FITTINGS

A SIMPLE SOLUTION TO CLEANLY ROUTE HOSES.

Our remote bulkhead fittings offer boaters a simple solution to cleanly route hoses through the hull while maintaining safety and aesthetics. Dometic's remote bulkhead fittings come in both single and dual hose applications for ultimate customization. Stainless steel options provide cleaner styling and corrosion resistance while blending in with your boat's stainless trim.

KEY BENEFITS

- Field installable series of products reduces the amount of stocking hose SKUs by allowing the user to install these on a standard hose kit
- Split grommet design allows for easy installation onto a hose assembly
- Increased inner diameter of plastic base plate simplifies fitting installation by allowing crimped hose fitting to pass through the base plate
- Stainless steel cover plates available for both single and dual applications provide cost effective cosmetic upgrade



PART NO	DESCRIPTION
HO7100	Kit field installed bulkhead, single hose, stainless
HO7105	Kit field installed bulkhead, single hose, plastic
HO7200	Kit field installed bulkhead, dual hose, stainless
HO7205	Kit field installed bulkhead, dual hose, plastic



POWER PURGE JR. AIR PURGING KIT

FAST, EASY & EFFICIENT AIR PURGING.



The EASY way to 100% purge air out of BayStar and SeaStar hydraulic steering systems. Reduce installation and warranty costs while enhancing the quality of the boat to the end user. A typical manual fill and purge takes the average experienced installer or service technician about 30 minutes per boat - by using the Power Purge Jr. this can be reduced to 10 minutes or less.

FEATURES

- Makes bleeding systems simple, ensuring steering feel is solid every time
- 100% portable
- Powered by 12V battery
- Fast and efficient set up
- Quick connect fittings
- Easy to operate
- Filter screens help keep contamination out of your steering system
- Complete Fill & Purge in 10 minutes or less
- HP6149 – Low Profile Hose Fitting Kit - for use in applications with limited clearance to hydraulic cylinder fill/bleed connections

ORDER INFO

COMPONENTS		SPARE PARTS	
Power Purge Jr.	HA5445-2	Motor Replacement Kit	HP6116
50 ft Hose Extension Kit	HA5462	Helm Adapter Kit	HP6148
Dual Cylinder Purging Kit	HA5461	Quick Connect Hose Ends	HP6170
Heavy Duty Cylinder Service Kit	HS5300	Hose/Quick Connect Replacement Kit	HP6171
Low Profile Hose Fitting Kit	HP6149	Power Purge Service Kit	HP6125



EASY TO OPERATE



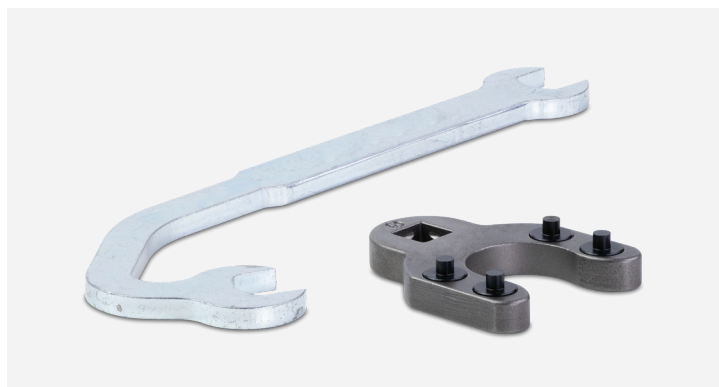
QUICK CONNECT FITTINGS



FAST AND EFFICIENT SETUP

HS5300 HEAVY DUTY CYLINDER SERVICE KIT

END GLAND / BLEEDER WRENCH SERVICE KIT



The End Gland / Bleeder Service Kit is designed to make servicing the hydraulic cylinder easier. This is a perfect tool kit for a dealer mechanic who works on SeaStar steering systems on a regular basis.

FEATURES

- Heavy-Duty bleeder wrench designed to reach cylinder bleeder fittings in tight spaces
- Heavy-Duty end gland pin wrench intended to easily remove end gland during servicing. Adaptable to fit 4-hole and 8-hole end glands
- Kit includes bleeder wrench, end gland wrench pin and instruction sheet
- Saves you money as you can now purchase the service kits without the older 2 pin wrenches

SEASTAR BOM TOOL

FIND THE COMPONENTS YOU NEED.

We have created a powerful, intelligent tool to help you quickly make steering selection decisions. The SeaStar Steering selector provides accurate and complete data in a way that makes it easy to find the components you need. This easy-to-use application will generate a bill of materials for SeaStar, BayStar, and Power Assisted hydraulic steering systems. The output is our recommended setup based on your input.

FEATURES

Determine the perfect setup for:

- Pontoon boats
- Bass boats
- Single engine boats
- Twin engine with tiebar
- Twin engine with twin cylinders
- Hydraulic parts lookup



www.seastarbom.com

FOO BEVE





D & RAGE

POWER & CONTROL

FOOD & BEVERAGE

HYGIENE & SANITATION

DOMETIC CFX3 SERIES POWERED COOLERS

YEARS OF INNOVATION FOR COOLING PERFECTION.



KEY BENEFITS

- Generous storage capacity ranging from 25l up to 99l
- Heavy-duty yet lightweight ExoFrame construction with fender frame protected edges and aluminum alloy handles
- Powerful VMSO3 compressor cooling technology efficiently refrigerates and deep-freezes to -7°F
- Easy-to-read High-Resolution Color Display and soft touch buttons enabling seamless control and monitoring of cooler performance
- CFX3 App allows temperature control via WiFi or Bluetooth and provides performance history
- 3-stage dynamic battery protection system prevents dead car battery or allows deep draw on dual batteries

Take control of outdoor adventures like never before with the Dometic CFX3 series powered coolers. Enjoy fresher food at your fingertips thanks to Dometic's market leading VMSO3 variable speed compressor with optimized software for better cooling, freezing and power consumption. The CFX3 series features a durable ExoFrame that protects the cooler, making it ideal for rugged trips. Strong, spring-loaded aluminum handles make it easy to lift and carry. Set the cooling temperature of your CFX3 on the new High Resolution Color display screen and pack all your favorite foods. Download the CFX3 app and roam free from worry. Once your CFX3 is connected through your phone, you can set the ideal temperature, and get a detailed history of energy and temperatures. We also offer a range of accessories to get the most out of your cooler, including a durable insulated protective cover and a cooler slide for easy access to your favorite items.



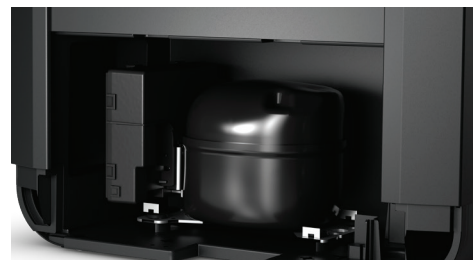
USER-FRIENDLY INTERFACE

Weatherproof high-resolution user interface displays operating status



RUGGED CONSTRUCTION

ExoFrame construction protects the unit from damage



EFFICIENT POWER CONSUMPTION

Optimized VMSO3 Compressor cooling technology



FLEXIBLE POWER OPTIONS

Powered by AC, DC and solar



CONVENIENT CFX3 APP

Temperature control and performance monitoring via CFX3 App



EASY TO CARRY

Strong aluminum alloy carry handles

TECHNICAL DATA

MODEL	CFX3 35	CFX3 45	CFX3 55IM	CFX3 75DZ	CFX3 95DZ	CFX3 100
Ref. No.	9600024617	9600024618	9600024620	9600024621	9600024622	9600024623
Dimensions (W x D x H in)	15.67 x 27.32 x 16.02	15.67 x 27.32 x 18.74	28.35 x 17.91 x 18.90	35.12 x 19.49 x 18.58	37.87 x 20.86 x 18.58	37.87 x 20.86 x 18.58
Compartments	Single	Single	Single w/ Rapid Freeze	Dual	Dual	Single
Storage Volume	36 l	46 l	53 l	75 l (45/30)	94 l (55/39)	99 l
Amount of Cans	50	67	83	113 (68/45)	133 (81/52)	153
Operating Voltage	12/24V DC - 100V-240 AC					
Insulation Type	PU (Polyurethane)					

POWER & CONTROL

FOOD & BEVERAGE

HYGIENE & SANITATION



DOMETIC CFX3 35



DOMETIC CFX3 45



DOMETIC CFX3 55IM



DOMETIC CFX3 75DZ



DOMETIC CFX3 95DZ



DOMETIC CFX3 100



DOMETIC PATROL HIGH PERFORMANCE COOLERS

DEMAND MORE FROM YOUR COOLER.






The Dometic Patrol coolers are built to last trip after trip with thick PU insulated walls, single piece rotomolded construction, and a full-length hinge pin. Our coolers are more than just a box to put ice in – smart features like a leak-proof drain, deep-freeze lid seal, and one-hand rubber latches make the Patrol coolers an ultra-functional product! We even care about what’s inside, using environmentally friendly C5 insulation which reduces GHG emissions over 90% compared to its replacement. With a Patrol cooler you are ready for any adventure!

KEY BENEFITS

- Robust rotomolded polyethylene construction withstands tough conditions
- Deep-freezer seals with thick PU insulation keeps ice cold for days
- Leak-proof drain for easy cleaning
- Lid firmly closed using one-handed rubber latches
- Durable, ergonomic rubber handles
- Full length lid hinge



TECHNICAL DATA

					
MODEL	PATROL 20	PATROL 35	PATROL 55	PATROL 75	PATROL 105
Ref. No.	9600006279	9600006280	9600006281	9600006282	9600006283
Storage volume (qt/Cans) * with 2-1 ice ratio	20 qt 15 cans	35 qt 28 cans	55 qt 43 cans	75 qt 58 cans	108 qt 81 cans
Outer dimensions (D x H x W, in)	14.25 x 15.50 x 21.13 in	16.88 x 16.00 x 27.75 in	19.13 x 17.13 x 30.13 in	19.13 x 18.25 x 35.38 in	19.09 x 17.95 x 45.28 in
Weight with basket (lbs approx.)	17.55 lbs	25.75 lbs	33.06 lbs	38.18 lbs	43.55 lbs
Material	One-piece rotomolded polyethylene				

DOMETIC ESKIMO CUP REFRIGERATED CUP HOLDER

THERMOELECTRIC CUP COOLER FOR BOATS.



Make your last sip colder than your first with the Dometic Eskimo Cup. It's a refrigerated cup holder that installs in any convenient location to keep drinks refrigerator-cold.

Keep a beverage can or bottle chilled on even the hottest days.

SPECIFICATIONS

PRODUCT	Reference Number: 250140101
POWER	Voltage: 12V DC Amps: 3.1
EXTERIOR DIMENSIONS	Height: 6.23 in/159 mm Width: 5.36 in/137 mm Depth: 6.85 in/174 mm
INTERIOR DIMENSIONS	Diameter: 2.95 in/75 mm Width: 4.0 in/102 mm
WEIGHT	Net Weight: 2.11 lbs/0.96 kg
SUPPLIED WITH	Power Cord Length: 16 in/407 mm



BUILT FOR THE ELEMENTS
Polished marine-quality 316 stainless steel trim ring



CONTEMPORARY DESIGN
Two blue LED interior lights



EASY TO INSTALL
Replaces most standard cup holders

DOMETIC CRX SERIES 3-IN-1 REFRIGERATORS

REFRIGERATE, FREEZE OR BOTH AT THE SAME TIME.



The CRX Series is a veritable chameleon. It's all fridge, it's all freezer, or it's a fridge-freezer. You decide. The patented easy-to-remove freezer compartment lets you choose how to use it and the soft-touch control panel lets you set the desired temperature. Smart electronics save energy by regulating the compressor speed for maximum efficiency.

KEY BENEFITS

- Patented removable freezer compartment transforms the unit into a larger-capacity refrigerator or freezer-only, with temperatures going down to 17° F/-8° C
- Speed-controlled compressor is more efficient and reduces noise
- Large fan overcomes high ambient temperatures
- Reliable IR sensor activates bright interior LED light
- Interior-mounted electronic thermistor for accurate temperature measurements
- When connected, the built-in drain will eliminate condensate during de-icing as well as any liquids that spill inside the unit
- Black and silver models include a flush-mount or space-saver flange (must be specified when ordering)
- Flush-mount or space-saver flange must be ordered separately for stainless-steel models



SEPARATE STORAGE

The separate compartment is ideal for fresh fruit and vegetables



TWO IN ONE

The fridge's control panel also has an integrated light



ORGANIZED STORAGE

The fridge interior is well organized with shelves

CRX TECHNICAL DATA						
	Model	CRX-1050E	CRX-1050S	CRX-1050U	CRX-1065E	CRX-1065S
Reference No.	9105306130	9105305962	9105306125	9105306131	9105305963	9105306126
Total Storage Capacity (cf/l)	1.6/45			1.9/55		
Amps @ 12V DC	5			5.5		
Amps @ 24VDC	2.6			2.8		
Amps @ 100VAC	1.14			1.22		
Amps @ 240VAC	0.53			0.58		
Overall Flush-Mount Flange Dimensions (H x W x D)	22.25 x 17.875 x 19.75 in (556 x 524 x 502 mm)			21.875 x 20.625 x 21.5 in (556 x 524 x 547 mm)		
Flush-Mount Flange Cutout Dimensions (H x W x D)	21.375 x 16.125 x 19.75 in (543 x 410 x 502 mm)			21 x 18.875 x 21.5 in (534 x 480 x 547 mm)		
Overall Space Saver Flange Dimensions (H x W x D)	22.125 x 17.25 x 17.5 in (562 x 439 x 445 mm)			21.75 x 20 x 19.25 in (553 x 508 x 489 mm)		
Space Saver Flange Cutout Dimensions (H x W x D)	21.125 x 15.25 x 17.5 in (527 x 458 x 489 mm)			20.75 x 18 x 19.25 in (527 x 458 x 489 mm)		
Net Weight (lbs/kg)	35.3/16			39.7/18		

E = Silver **S** = Stainless Steel **U** = Black

CRX TECHNICAL DATA						
Model	CRX-1080E	CRX-1080S	CRX-1080U	CRX-1110E¹	CRX-1110S¹	CRX-1110U¹
Reference No.	9105306132	9105305964	9105306127	9105306133	9105306516	9105306128
Total Storage Capacity (cf/l)	2.6/73			3.7/104		
Amps @ 12V DC	5.6			6.2		
Amps @ 24VDC	2.9			3		
Amps @ 100VAC	1.23			0.82		
Amps @ 240VAC	0.56			0.34		
Overall Flush-Mount Flange Dimensions (H x W x D)	26.375 x 21.625 x 21 in (670 x 550 x 534 mm)			30.5 x 23.375 x 22 in (775 x 594 x 559 mm)		
Flush-Mount Flange Cutout Dimensions (H x W x D)	25.5 x 19.875 x 21 in (648 x 505 x 534 mm)			29.625 x 21.625 x 22 in (753 x 550 x 559 mm)		
Overall Space Saver Flange Dimensions (H x W x D)	26.25 x 21 x 18.75 in (667 x 534 x 731 mm)			30.375 x 22.75 x 19.75 in (772 x 578 x 502 mm)		
Space Saver Flange Cutout Dimensions (H x W x D)	25.25 x 19 x 18.75 in (642 x 483 477 mm)			29.375 x 20.75 x 19.75 in (477 x 727 x 502 mm)		
Net Weight (lbs/kg)	44.1/20			60.86/28		

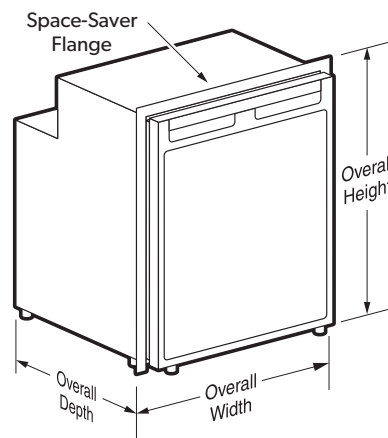
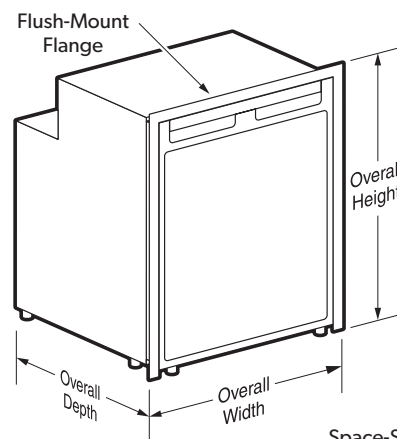
¹ Freezer not removable **E** = Silver **S** = Stainless Steel **U** = Black

DOMETIC CRXD SERIES DRAWER REFRIGERATORS

CONVERT EMPTY NICHES INTO PRACTICAL COOLING.



CRXD refrigerators have a durable metal frame construction able to withstand harsh marine conditions, yet feature an attractive, stylish appearance that will complement any galley, cockpit or flybridge. The door's face panel is interchangeable, and the recessed door handle promotes sleek, modern styling. The interior is spacious with a removable freezer compartment.



KEY BENEFITS

- 12/24V DC or 110/220V AC operation
- Freezer compartment is removable to allow more space for items needing refrigeration only
- Attractive, modern styling
- Durable metal frame construction
- Fully hermetic compressor
- Continuously variable thermostat
- Low-voltage protection
- Recessed door handle
- Door lock's venting mechanism holds door open slightly for easy defrosting and mildew prevention
- Bright cool-blue, energy-efficient interior light
- New stainless-steel model with one-piece wrapped door



ROOM FOR DRINKS AND MORE

1.65 cu ft/46.7 l capacity



MORE FROZEN TREATS

0.22 cu ft/6.2 l freezer capacity



SMOOTH

Easy-pull drawer on ball-bearing slides

CRXD TECHNICAL DATA					
Model	CRXD-1050E	CRXD-1050S	CRXD-1050U	CRXD-1065E	CRXD-1065S
Reference No.	9105305558	9105306694	9105305535	9105306722	9105306724
Total Storage Capacity (cf/l)	1.6/45			1.9/55	
Amps @ 12V DC	5			5.5	
Amps @ 24VDC	2.6			2.8	
Amps @ 100VAC	1.14			1.22	
Amps @ 240VAC	0.53			0.58	
Overall Flush-Mount Flange Dimensions (H x W x D)	22.25 x 17.875 x 19.75 in (556 x 524 x 502 mm)			21.875 x 20.625 x 21.5 in (556 x 524 x 547 mm)	
Flush-Mount Flange Cutout Dimensions (H x W x D)	21.375 x 16.125 x 19.75 in (543 x 410 x 502 mm)			21 x 18.875 x 21.5 in (534 x 480 x 547 mm)	
Overall Space Saver Flange Dimensions (H x W x D)	22.125 x 17.25 x 17.5 in (562 x 439 x 445 mm)			21.75 x 20 x 19.25 in (553 x 508 x 489 mm)	
Space Saver Flange Cutout Dimensions (H x W x D)	21.125 x 15.25 x 17.5 in (527 x 458 x 489 mm)			20.75 x 18 x 19.25 in (527 x 458 x 489 mm)	
Net Weight (lbs/kg)	35.3/16			39.7/18	

E = Silver **S** = Stainless Steel **U** = Black



DOMETIC CD SERIES DRAWER REFRIGERATORS

CONVERT EMPTY SPACES INTO PRACTICAL COOLING.

With an adjustable temperature control and a detachable cooling unit, this fridge is flexible enough to meet your needs – compact design to make the best of small spaces.



EASY TO MAINTAIN

Fully hermetic compressor with integrated control electronics

CD TECHNICAL DATA				
Model	CD-020DC	CD-020DCS	CD-030DCW	CD-030DCS
Ref. Number	9600001132	9600001533	9600001128	9600001129
Storage Volume (cu ft/l)	0.71/20		1.06/30	
Amps @ 12V DC (A)3	3		3	
Amps @ 24V DC (A)	1.5		1.5	
Power Consumption @ 12v DC (W)	36		40	
Temperature Range-Low (°F/C)	32/0		32/0	
Temperature Range-High (°F/C)	59/15		59/15	
Height (in/mm)	9.84/250		9.84/250	
Width (in/mm)	17.24/438		17.32/440	
Depth (in/mm)	22.24/565		28.74/730	
Net Weight (lb/kg)	35.5/16.1		39.68/18	

DOMETIC CB SERIES TOP-LOADING REFRIGERATORS

SPECIALLY DESIGNED FOR CONFINED SPACES.

The CB Series of top-loading refrigerators is available in 1.3 cu. ft. (36 liters) and 1.4 cu. ft. (39 liters) capacities. These units have energy-efficient Secop compressors that run on 12/24V DC power or 110/220V AC power (optional).

A CB unit permanently installs in a cupboard space and continues working even in inclined positions. Its lift-off lid has superior seal and insulation and can accommodate a laminate to match your countertops.

KEY BENEFITS

- 12/24V DC or 110/220V AC operation
- Ideal for cupboard spaces
- Can be used as a bait refrigerator
- Stainless-steel interior
- Lift-off lid with superior seal and insulation
- Top loading for improved efficiency and better performance
- CFC-free polyurethane insulation
- Variable thermostat
- Temperature range of 32°F (0°C) to 55°F (13°C)
- Environmentally safe R-134A refrigerant



Part No.	Description
9105204661	CB-036, 1.3 cu. ft. top-loading refrigerator
9108783522	CB-040, 1.4 cu. ft. top-loading refrigerator



Vary the temperature as you wish and use energy efficiently.



The CB-036 has a 1.3 cu. ft. (36 liter) refrigeration capacity.



The CB-040 has a 1.4 cu. ft. (39 liter) refrigeration capacity.



HYGI SANIT



ENERGY & SANITATION

MASTERFLUSH 7000 SERIES MACERATOR TOILETS

MAXIMUM COMFORT NEEDS MINIMAL SPACE.

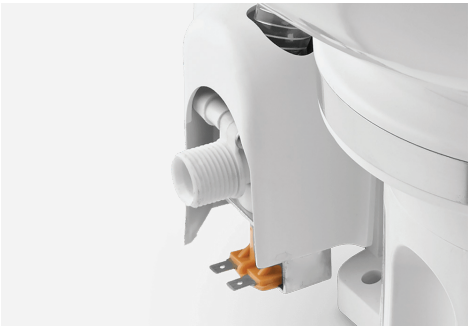
The MasterFlush 7000 Series is aesthetically pleasing, has efficient macerating technology, is practical and comfortable, yet is all about saving space. These clever toilets are designed with small boats in mind and can accommodate any plumbing angle due to the smart Orbit 360° technology of the rotating base. Available in a standard height or a low-profile, they maximize any space.

KEY BENEFITS

- (ORBIT) Omnidirectional Rotating Base
- Installation Technology
- Powerful macerating flush
- Enameled wooden seat for added comfort
- Energy efficient and low water consumption per flush
- Small footprint – fits in almost any head compartment



Model	7120	7160	7220	7260
Ref. No.	304712001 (12v) 304712002 (24v)	304716001 (12v) 304716002 (24v)	304722001 (12v) 304722002 (24v)	304726001 (12v)
Description	Medium-height fresh water macerator toilet, residential round-front bowl	Medium-height raw sea water macerator toilet, residential round-front bowl	Low-profile electric fresh water macerator toilet, compact marine bowl	Low-profile electric raw sea water macerator toilet, compact marine bowl
Dimensions	15 W x 14.75 H x 19 D (381 x 375 x 483)		14.5 W x 13.25 H x 18.75 D (368 x 337 x 476)	
Discharge	1.5 in./38 mm ID plumbing	1.5 in./38 mm ID plumbing	1.5 in./38 mm ID plumbing	1.5 in./38 mm ID plumbing



INSTALLATION FRIENDLY

An electric water valve is integrated into the base



VERSATILE

Orbit technology allows installation into tight spaces

SANIPOTTIE 970 SERIES PORTABLE TOILETS

POWERFUL FLUSHING AT THE TOUCH OF A BUTTON.

When on the move, people wish for the comforts of home and the 970 Series of portable toilets provides just that. The powerful touch-button flush technology sets this toilet range miles apart from their competitors as no pumping or batteries are required. They are available in two sizes with an adult-sized seat comfortable beyond words.

Powerful flushing at the touch of a button without constant pumping or batteries – it's what sets the SaniPottie 970 series apart from other portable toilets.

KEY BENEFITS

- Portable so you can take it anywhere
- Less mess due to an extra-long, pivoting discharge spout
- Less pump with a push button operation
- Less splash as the tank level indicator protects against overflow
- Home comforts of an adult-sized seat



Model	972 ¹	974	974MSD	975	975MSD	976 ¹
Ref. No.	301097206	301097406	301197406	301097506	301197506	301097606
Description ¹	2.5 gal/9.51 capacity portable toilet	2.6 gal/9.81 capacity portable toilet, mounting brackets	2.6 gal/9.81 capacity portable toilet, mounting brackets, MSD fittings	5 gal/18.91 capacity portable toilet, mounting brackets	5 gal/18.91 capacity portable toilet, mounting brackets, MSD fittings	5 gal/18.91 capacity portable toilet
Discharge	Manual	Manual	1.5 in/38 mm ID plumbing	Manual	1.5 in/38 mm ID plumbing	Manual

¹ Mounting brackets are also available as separate accessory kits for 972 and 976 models. Order Part No. 385320005.



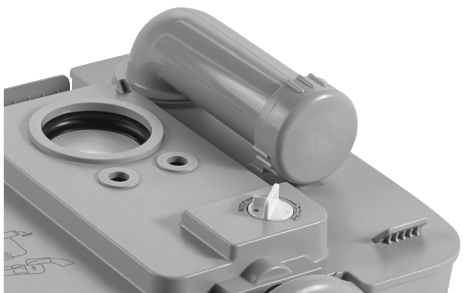
LESS PUMP

This effective system requires less pump action



PUSH BUTTON OPERATION

A simple push button operation



LESS MESS

Less mess due to an extra long pivoting discharge spout

SANIPOTTIE 960 SERIES PORTABLE TOILETS

CONVENIENCE OF HOME, ANYWHERE YOU TRAVEL.

The 960 series of convenient portable toilets have long been relied upon by recreational boat users. Simple to use, available in two colors and self-contained, these adult-sized toilets have a bellows style flush for a reassuringly clean rinse every time.

STRONG AND DURABLE

With high-density polyethylene construction, SaniPottie 960 series portable toilets have withstood the rugged demands of boaters and campers for more than 30 years. Their lightweight portability and easy-to-use features make them a camping favorite all over the world.

KEY BENEFITS

- High-density polyethylene construction withstands demanding conditions
- Easy-to-clean, scratch-resistant finish
- Secure-locking side latches
- Available with 2.5 or 5.0 gal. waste tank



Model	962 ¹	964	964MSD	965	965MSD	966
Ref. No.	301096202 (Parchment)	311096402 (Parchment)	311196402 (Parchment)	311096502 (Parchment)	311196502 (Parchment)	301096602 (Parchment)
	301096206 (Platinum)	311096406 (Platinum)	311196406 (Platinum)	311096506 (Platinum)	311196506 (Platinum)	301096606 (Platinum)
Description ¹	2.5 gal/9.51 capacity portable toilet	2.5 gal/9.51 capacity portable toilet, mounting bracket	2.5 gal/9.51 capacity portable toilet, mounting brackets, MSD fittings	5.0 gal/18.91 capacity portable toilet, mounting brackets, MSD fittings	5.0 gal/18.91 capacity portable toilet, mounting brackets, MSD fittings	5.0 gal/18.91 capacity portable toilet
Discharge	Manual	Manual	1.5 in/38 mm ID plumbing	Manual	1.5 in/38 mm ID plumbing	Manual

¹ Mounting brackets are also available as separate accessory kits for 962 models. Order Part No. 385310018.



SECURE PORTABILITY

Firm-locking side latches assure worry-free portability



NO-HASSLE CLEANING

Easy-to-clean, scratch-resistant finish makes it easy to keep looking like new



STRONG AND DURABLE

High-density polyethylene construction



Mobile living made easy.



DOMETIC

1 Sierra Place
Litchfield, IL 62056
Phone: 877-663-8396
Fax: 217-441-8340

Printed in the U.S.A.

dometic.com

CATALOG-DOMNPS



Marine Supplement | Rev. 06.07.21